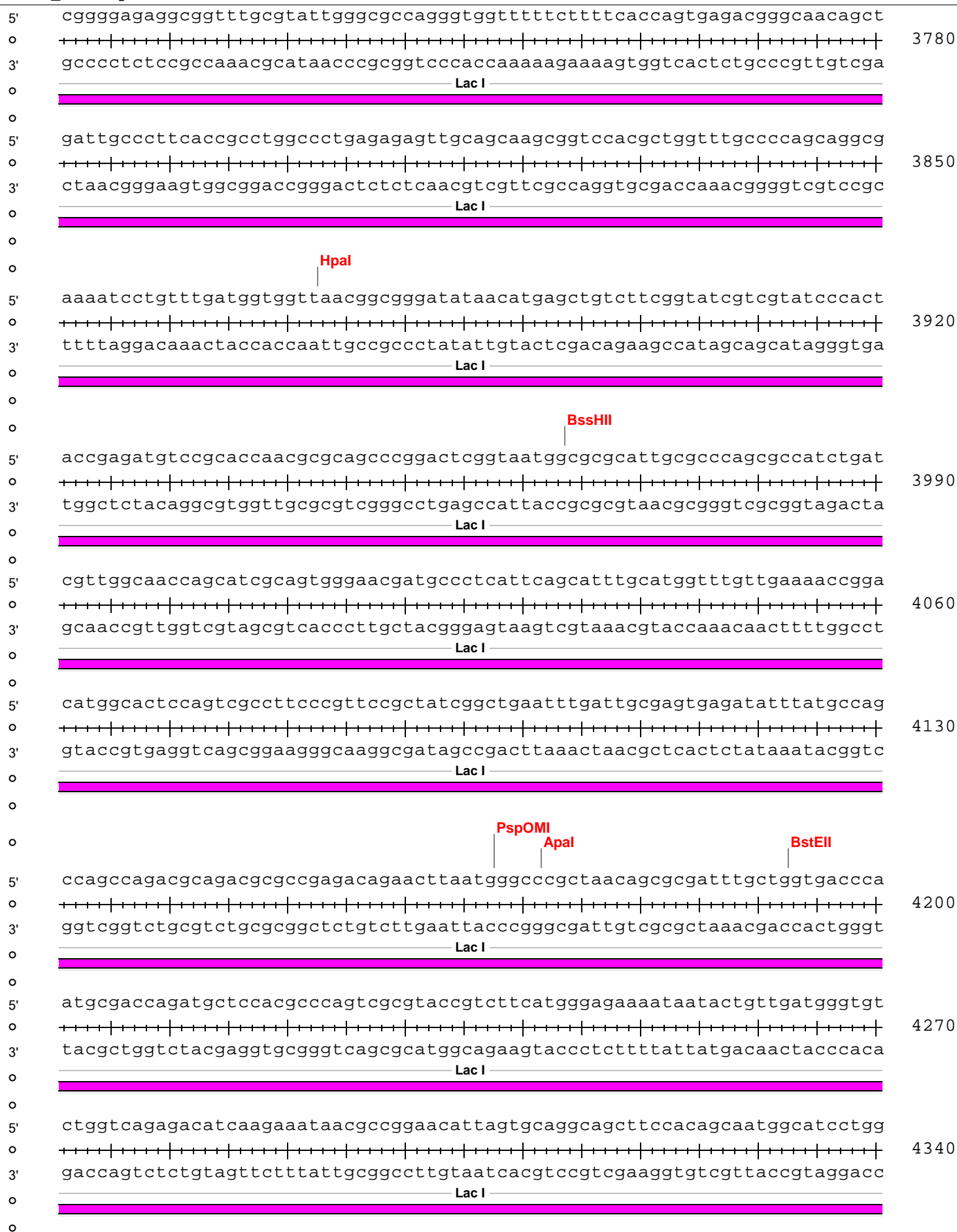


BGT41_T01a2-pET32-DEST



o
5' tcatccagcggatagttaatgatcagcccactgacgcggtgcgcgagaagattgtgcaccgcccgtttac 4410
o
3' agtaggtcgcctatcaattactagtcgggtgactgcgcaacgcgctcttctaacacgtggcggcgaatg
o
Lac I
o
5' aggcttcgacgcccgttcggttctaccatcgacaccaccacgctggcaccagttgatcggcgcgagattt 4480
o
3' tccgaagctgcggcgaagcaagatggtagctgtgggtggtgacaccgtgggtcaactagcccgcgctctaaa
o
Lac I
o
5' aatcgccgcgacaatttgcgacggcgcggtgcagggccagactggaggtggcaacgccaatcagcaacgac 4550
o
3' ttagcggcgtgttaaagcgtgcccgcgcacgtcccggctgacctccaccggtgcggttagtcggttgcgtg
o
Lac I
o
5' tgtttgcccgcagttggttgccacgcggttgggaatgtaattcagctccgccatcgcccgttccactt 4620
o
3' acaaacgggcgggtcaacaacacgggtgcgccaacccttacattaagtcgaggcggtagcggcgaaggtgaa
o
Lac I
o
5' tttcccgcgttttcgcagaaacgtggctggcctgggtcaccacgcgggaaacggtctgataagagacacc 4690
o
3' aaagggcgaaaagcgtctttgcaccgaccggaccaagtgggtgcgccctttgccagactattctctgtgg
o
BstAPI
o
5' ggcatactctgcgacatcgtataacgttactggtttcacattcaccaccctgaattgactctcttccggg 4760
o
3' ccgtagtagacgctgtagcatattgcaatgaccaaagtgtaagtggggacttaactgagagaaggccc
o
5' cgctatcatgccataaccgcgaaaggttttgcgccattcgatgggtgtccgggatctcgacgctctccetta 4830
o
3' gcgatagtacggatggcgctttccaaaacgcggtaagctaccacaggccctagagctgcgagaggggaat
o
EcoNI
o
5' tgcgactcctgcattaggaagcagcccagtagtaggttgaggccggtgagcaccgcccgcgcaaggaatg 4900
o
3' acgctgaggacgtaatccttcgctcgggtcatcatccaactccggcaactcgtggcggcggcgttccttac
o
SphI
o
5' gtgcatgcaaggagatggcgcccaacagtccccggccacggggcctgccaccatacccacgcccgaaca 4970
o
3' cacgtacgttcctctaccgcgggttgtcagggggccggtgccccggacggtggtatgggtgcggtttgt
o
5' agcgtcatgagcccgaagtggcgagcccgatcttccccatcggatggtcggcgatataggcggccagca 5040
o
3' tcgagagtactcgggcttcaccgctcgggctagaaggggtagccactacagccgctatatccgcggctcgt
o

BGT41_T01a2-pET32-DEST

5' gtgaagtggcggcaaccaaagtgggtgcaactgtctaaaggtcagttgaaagagttcctcgcagcctaact
 3' cacttcaccgcccgttggtttcaccacgtgacagatttccagtcaactttctcaaggagctgcgattgga
 Trx Tag

5530

G E V A A T K V G A L S K G Q L K E F L D A N L
 85 86 87 88 89 90 91 92 93 94 95 96 97 98 99 100 101 102 103 104 105 106 107 108

MscI

5' ggccggttctggttctggccatatgcaccatcatcatcattcttctggtctggtgccacgcggttct
 3' ccggccaagaccaagaccggtatacgtggtagtagtagtaagaagaccagaccacggtgcgccaaga
 T...g His6-tag Thrombin

5600

A G S G S G H M H H H H H S S G L V P R G S
 109 110 111 112 113 114 115 116 117 118 119 120 121 122 123 124 125 126 127 128 129 130 131

BstBI

Acc65I

KpnI

5' ggtatgaaagaaaccgctgctgctaaattcgaacgccagcacatggacagcccagatctgggtaccgacg
 3' ccatactttcttggcgacgacgatttaagcttgcggtcgtgtacctgtcgggtctagacctatggctgc
 En...e

5670

G M K E T A A A K F E R Q H M D S P D L G T D
 132 133 134 135 136 137 138 139 140 141 142 143 144 145 146 147 148 149 150 151 152 153 154

NcoI

5' acgacgacaaggccatggcgatATCAACAAGTTTGTACAAAAAAGCAGGCTctgaaaacttgtactttca
 3' tgctgctgttccggtaccgctaTAGTTGTTCAAACATGTTTTTTCGTCCGAgacttttgaacatgaaagt
 Enterokinase attB1 TEV site

5740

BGT41_T01a2-pDONR221

D D D K A M A I S T S L Y K K A G S E N L Y F Q
 155 156 157 158 159 160 161 162 163 164 165 166 167 168 169 170 171 172 173 174 175 176 177 178

5' aggcACCGAAGAAAGAAAGAATCAAAAGCAAGAAGGCTCTAAAGTAAAAACATTCCCAGTCTCTTTTGCT
 3' tccgTGGCTTCTTTCTTTCTTAGTTTTTCGTTCTTCCGAGATTTTCATTTTTGTAAGGGTCAGAGAAAACGA
 BGT41_T01a2

5810

BGT41_T01a2-pDONR221

G T E E R K N Q K Q E G S K V K T F P V S F A
 179 180 181 182 183 184 185 186 187 188 189 190 191 192 193 194 195 196 197 198 199 200 201

BGT41_T01a2-pET32-DEST

5' TTAGGTGAAATTAAGAAAACATCACTATTACGACTAATAGCGCTTCTAATACTTCAAAGGAACAAAAA
 3' AATCCACTTTAATTTCTTTTGTAGTGATAATGCTGATTATCGCGAAGATTATGAAGTTTCTTGTTTTTT

5880

BGT41_T01a2

BGT41_T01a2-pDONR221

L G E I K E N I T I T T N S A S N T S K E Q K
 202 203 204 205 206 207 208 209 210 211 212 213 214 215 216 217 218 219 220 221 222 223 224

5' GATTTGGAGACCAGAGTAAAACATAAAGAAAAAGATACCAATACAATTACTAAACCTTCCAAAGATCA
 3' CTAAACCTCTGGTCTCATTTTGATATTTCTTTTTTCTATGGTTATGTTAATGATTTGGAAGTTTCTAGT

5950

BGT41_T01a2

BGT41_T01a2-pDONR221

R F G D Q S K T I K K K D T N T I T K P S K D Q
 225 226 227 228 229 230 231 232 233 234 235 236 237 238 239 240 241 242 243 244 245 246 247 248

Swal

5' AATCATTAATCAAGCATTTAAATTTTCATTCACAAGGCAATATAAAGAAGCAGCAAAAAATTATCAATAT
 3' TTAGTAATTAGTTCGTAAATTTAAAGTAAGTGTTCCGTTATATTTTCTTCGTCGTTTTTTAATAGTTATA

6020

BGT41_T01a2

BGT41_T01a2-pDONR221

I I N Q A F K F H S Q G N I K E A A K N Y Q Y
 249 250 251 252 253 254 255 256 257 258 259 260 261 262 263 264 265 266 267 268 269 270 271

5' TTCATTAATCAAGGTTTCTCTGACCACATGGTTTTTCTAATTATGGAGCAATATTAAGAGATCTTGGTA
 3' AAGTAATTAGTTCCAAAGAGACTGGTGTACCAAAAAGATTAATACCTCGTTATAATTCTCTAGAACCAT

6090

BGT41_T01a2

BGT41_T01a2-pDONR221

F I N Q G F S D H M V F S N Y G A I L R D L G
 272 273 274 275 276 277 278 279 280 281 282 283 284 285 286 287 288 289 290 291 292 293 294

5' ATTTACAAGATGCAGAATTATATACTCGCAAAGCAATAAAATTAATCCTAATTACGCATTGGCTTACTC
 3' TAAATGTTCTACGTCTTAATATATGAGCGTTTCGTTAATTTAATTAGGATTAATGCGTAACCGAATGAG

6160

BGT41_T01a2

BGT41_T01a2-pDONR221

N L Q D A E L Y T R K A I K I N P N Y A L A Y S
 295 296 297 298 299 300 301 302 303 304 305 306 307 308 309 310 311 312 313 314 315 316 317 318

BGT41_T01a2-pET32-DEST

5' TAATCTGGGAAATGTATTAAAAGATCTTGGTAAGTCACAAGATGCAGAATTGTCATACCGCAAAGCAATT
 3' ATTAGACCCTTTACATAATTTTCTAGAACCATTTCAGTGTTCTACGTCTTAACAGTATGGCGTTTCGTTAA

6230

BGT41_T01a2

BGT41_T01a2-pDONR221

N L G N V L K D L G K S Q D A E L S Y R K A I
 319 320 321 322 323 324 325 326 327 328 329 330 331 332 333 334 335 336 337 338 339 340 341

5' CAAATTAATCCTAATTACGCAGATGCACATTACAATCTGGGAATAATATTGAAAGAAGCTTGGTAATTTAC
 3' GTTTAATTAGGATTAATGCGTCTACGTGTAATGTTAGACCCTTATTATAACTTTCTTGAACCATTAAATG

6300

BGT41_T01a2

BGT41_T01a2-pDONR221

Q I N P N Y A D A H Y N L G I I L K E L G N L
 342 343 344 345 346 347 348 349 350 351 352 353 354 355 356 357 358 359 360 361 362 363 364

Nsil

5' AAGACGCAGAATTGTCATATCGCAAAGCAATTCAAATTAATCCTAATTACGCAGATGCATATTTCCAATCT
 3' TTCTGCGTCTTAACAGTATAGCGTTTCGTTAAGTTTAATTAGGATTAATGCGTCTACGTATAAGGTTAGA

6370

BGT41_T01a2

BGT41_T01a2-pDONR221

Q D A E L S Y R K A I Q I N P N Y A D A Y S N L
 365 366 367 368 369 370 371 372 373 374 375 376 377 378 379 380 381 382 383 384 385 386 387 388

5' GGGAAATGTATTAAAAGATCTTGATAATTTACAAGACGCAGAATTGTCATACCGCAAAGCAATTCAAAT
 3' CCCTTTACATAATTTTCTAGAACTATTAATGTTCTGCGTCTTAACAGTATGGCGTTTCGTTAAGTTTAA

6440

BGT41_T01a2

BGT41_T01a2-pDONR221

G N V L K D L D N L Q D A E L S Y R K A I Q I
 389 390 391 392 393 394 395 396 397 398 399 400 401 402 403 404 405 406 407 408 409 410 411

5' AATCCTAGTTACGCAGACGCATATTCAAATCTGGGAAATGTATTAAAAGATCTTGGTAATTTACAAGACG
 3' TTAGGATCAATGCGTCTGCGTATAAGTTTACATAATTTTCTAGAACCATTAAATGTTCTGC

6510

BGT41_T01a2

BGT41_T01a2-pDONR221

N P S Y A D A Y S N L G N V L K D L G N L Q D
 412 413 414 415 416 417 418 419 420 421 422 423 424 425 426 427 428 429 430 431 432 433 434

BGT41_T01a2-pET32-DEST

