

o

5' cctagccgggtcctcaacgacaggagcacgatcatgcgccaccgctggccaggaccaacgctgcccgaga 2940

o

3' ggatcggcccaggagttgctgtcctcgtgctagtagcgcgtgggaccggctcctgggttgcgacgggctct

o

o

5' tgcgcccgcgtgaggctgctggagatggcggacgcgatggatatgttctgccaagggttggtttgcgcatt 3010

o

3' acgcggcgcacgcccacgacctctaccgcctgcgctacctatacaagacgggtcccaaccaaacgcgtaa

o

5' cacagttctccgcaagaattgattggctccaattcttgagtggtgaatccgtagcgaggtgccgcccgg 3080

o

3' gtgtcaagaggcgcttcttaactaaccgaggttaagaacctcaccacttaggcaatcgctccacggcggcc

o

5' cttccattcaggtcgaggtggcccggctccatgcaccgcgacgcaacgcggggaggcagacaaggtatag 3150

o

3' gaaggttaagtccagctccaccgggcccaggtacgtggcgctgcgcttgcgcccctccgtctgttccatatac

o

5' ggcggcgcctacaatccatgccaaaccgcttccatgtgctcgccgaggcggcataaatcgccgtgacgatc 3220

o

3' ccgcgcggatgtaggtacggttgggcaaggtacacgagcggctccgccgtatttagcggcactgctag

o

5' agcgggtccagtgatcgaagttaggctggtaagagccgcgagcgcgatccttgaagctgtccctgatggctcg 3290

o

3' tcgccaggtcactagcttcaatccgaccttctcggcgctcgctaggaacttcgacagggactaccagca

o

5' catctacctgcctggacagcatggcctgcaacgcgggcatcccgatgccgcccgaagcgagaagaatcat 3360

o

3' gtagatggacggacctgtcgtaccggacgcttgcgcccgtagggctacggcggccttcgctcttcttagta

o

o

5' aatggggaaggccatccagcctcgcgctcgcgaaacgcccagcaagacgtagcccagcgcgctcggccgcatg 3430

o

3' ttacccttccggtaggtcggagcgcagcgccttgcggctcgttctgcatcgggtcgcgcagccggcgggtac

o

5' ccggcgataatggcctgcttctcgccgaaacgcttgggtggcgggaccagtgacgaaggcttgagcgaggg 3500

o

3' ggccgctattaccggacgaagagcggcttggcaaacaccgcacctggctcactgcttccgaactcgctccc

o

5' cgtgcaagattccgaataaccgcaagcgacaggccgatcatcgtcgcgctccagcgaaagcggtcctcgcc 3570

o

3' gcacgttctaaggcttatggcgttcgctgtccggctagtagcagcgcgaggtcgcttccgacaggagcgg

o

5' gaaaatgaccagagcgcctgccggcacctgtcctacgagttgcatgataaagaagacagtcataagtgcg 3640

o

3' cttttactgggtctcgcgacggccgtggacaggatgctcaacgtactatttcttctgtcagattcacgc

o

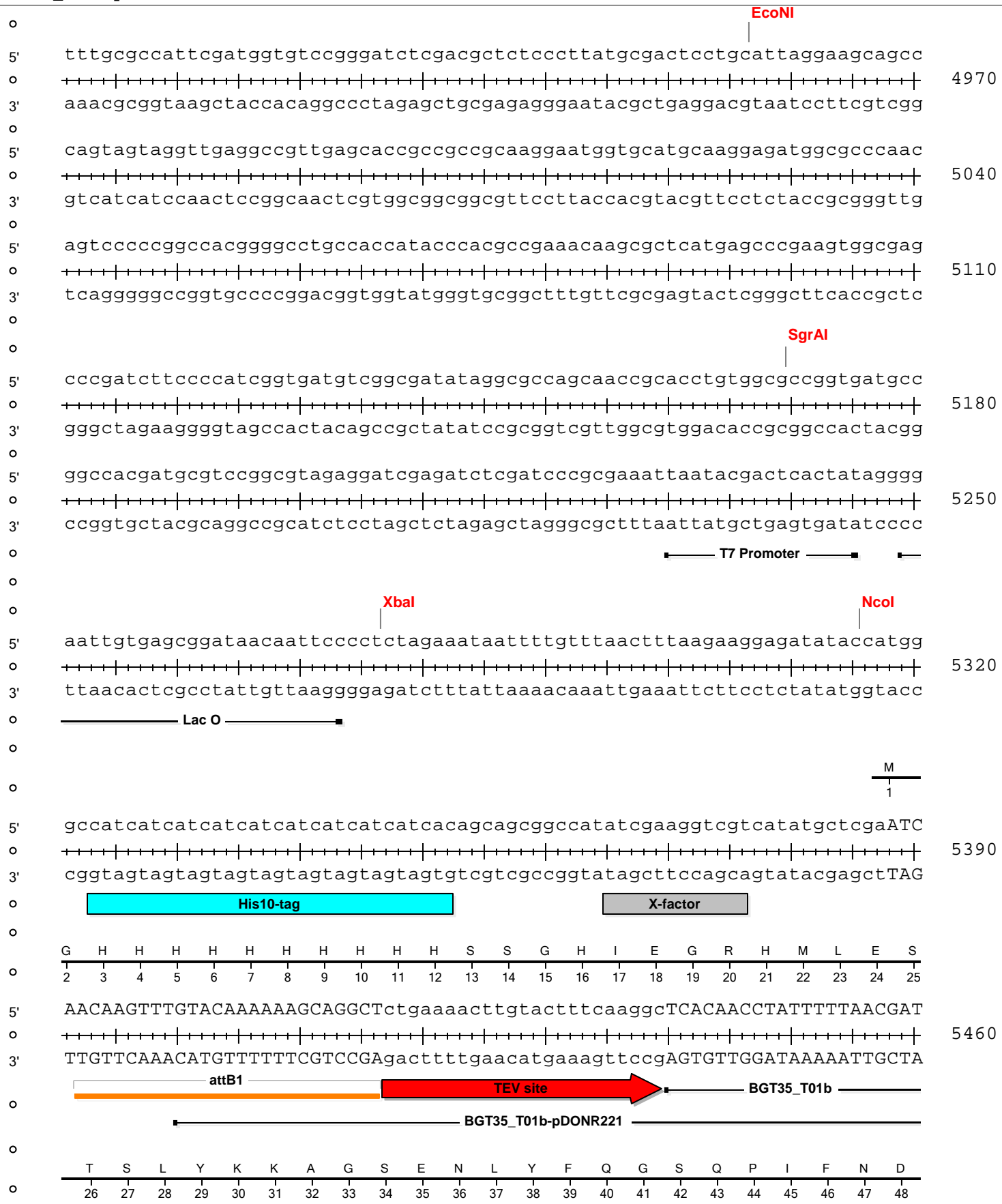
FspAI

AvaI
BmeT110I

BsmI

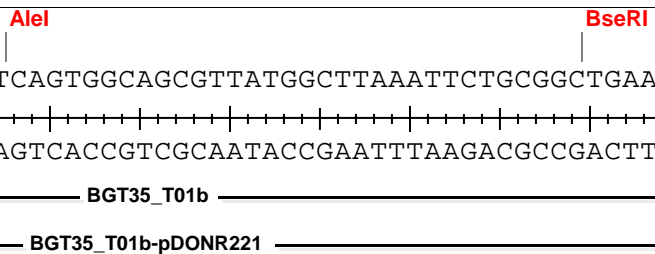
EagI

o
5' agaacttaatgggcccgctaacagcgcgatttgcctggtgacccaatgcgaccagatgctccacgcccagt 4340
o
3' tcttgaattaccggcgattgtcgcgctaaacgaccactgggttacgctggtctacgaggtgcggggtca
o
Lac I
o
5' cgcgtaccgtcttcatgggagaaaataataactggtgatgggtgctctggtcagagacatcaagaaataacg 4410
o
3' gcgcatggcagaagtaccctcttttattatgacaactaccacagaccagtctctgtagttctttattgc
o
Lac I
o
5' ccggaacattagtgaggcagcttccacagcaatggcatcctgggtcatccagcggatagttaatgatcag 4480
o
3' ggccttgtaatcacgtccgtcgaagggtgctggtaccgtaggaccagtaggtcgccctatcaattactagtc
o
Lac I
o
o
o
o
5' cccactgacgcgttgcgcgagaagattgtgcaccgcccgtttacaggcttcgacgccgcttcgttctacc 4550
o
3' ggggtgactgcgcaacgcgctcttctaacacgtggcgggcgaatgtccgaagctgcgggcgaagcaagatgg
o
Lac I
o
5' atcgacaccaccagctggcaccagttgatcggcgcgagatttaatcgccgcgacaatttgcgacggcg 4620
o
3' tagctggtggtggtgcgaccgtgggtcaactagccgcgctctaaattagcggcgctgttaaaccgtgcccg
o
Lac I
o
5' cgtgcagggccagactggaggtggcaacgccaatcagcaacgactgtttgcccgccagttggtgtgccac 4690
o
3' gcacgtcccggctgacctccaccgttgcggttagtcggtgctgacaaacgggcggtcaacaacacggtg
o
Lac I
o
5' gcggttgggaatgtaattcagctccgccatcgccgcttccactttttcccgcggttttcgcagaaacgtgg 4760
o
3' cgccaacccttacattaagtcgagggcggtagcggcgaaggtgaaaaagggcgcaaaagcgtctttgcacc
o
Lac I
o
5' ctggcctgggttcaccacgcgggaaacgggtctgataagagacaccggcatactctgcgacatcgtataacg 4830
o
3' gaccggaccaagtgggtgcgccctttgccagactattctctgtggccggtatgagacgctgtagcatattgc
o
5' ttactggtttcacattcaccaccctgaattgactctcttccgggcgctatcatgccataccgcgaaaggt 4900
o
3' aatgaccaagtgtaagtgggtgggacttaactgagagaaggcccgcgatagtagcggatggcgctttcca
o



BGT35_T01b-pET16-DEST

5' AAGCAATTTTCAGGAAGCGCTTTCACGTCAGTGGCAGCGTTATGGCTTAAATTCTGCGGCTGAAATGACTC 5530
 3' TTCGTTAAAGTCCTTTCGCGAAAGTGCAGTCACCGTCGCAATACCGAATTTAAGACGCCGACTTTACTGAG



K Q F Q E A L S R Q W Q R Y G L N S A A E M T
 49 50 51 52 53 54 55 56 57 58 59 60 61 62 63 64 65 66 67 68 69 70 71

5' CTCGCCAGTGGTGGCTAGCAGTGAAGCACTGGCCGAAATGCTGCGTGCTCAGCCATTCGCCAAGCC 5600
 3' GAGCGGTCACCACCGATCGTCACTCACTTCGTGACCGGCTTTACGACGCACGAGTCGGTAAGCGGTTTCGG



P R Q W W L A V S E A L A E M L R A Q P F A K P
 72 73 74 75 76 77 78 79 80 81 82 83 84 85 86 87 88 89 90 91 92 93 94 95

5' GGTGGCGAATCAGCGACATGTTAACTACATCTCAATGGAGTTTTTGATTGGTTCGCCTGACGGGCAACAAC 5670
 3' CCACCGCTTAGTCGCTGTACAATTGATGTAGAGTTACCTCAAAAATAACCAGCGGACTGCCCGTTGTTG

V A N Q R H V N Y I S M E F L I G R L T G N N
 96 97 98 99 100 101 102 103 104 105 106 107 108 109 110 111 112 113 114 115 116 117 118

5' CTGTTGAATCTCGGCTGGTATCAGGATGTACAGGATTCGTTGAAGGCTTATGACATCAATCTGACGGACC 5740
 3' GACAACTTAGAGCCGACCATAGTCTACATGTCTAAGCAACTTCCGAATACTGTAGTTAGACTGCCTGG

L L N L G W Y Q D V Q D S L K A Y D I N L T D
 119 120 121 122 123 124 125 126 127 128 129 130 131 132 133 134 135 136 137 138 139 140 141

5' TGCTGGAAGAAGAGATCGACCCGGCGCTGGGTAACGGTGGTCTGGGACGTCTGGCGGCGTGCTTCCTCGA 5810
 3' ACGACCTTCTTCTCTAGCTGGGCGCGACCCATTGCCACCAGACCCTGCAGACCCGCCGCACGAAGGAGCT

L L E E E I D P A L G N G G L G R L A A C F L D
 142 143 144 145 146 147 148 149 150 151 152 153 154 155 156 157 158 159 160 161 162 163 164 165

BGT35_T01b-pET16-DEST

5' AAAC TGGT GAAAG CTTACT GCCG CGCCAC ATGC AGATTATTAACGAAATTAATACTCGCTTTAAAACGC
 3' TTTGACCACTTTCCGAATGACGGCGCGGTGTACGTCTAATAATTGCTTTAATTATGAGCGAAATTTTGCG

6580

BGT35_T01b

BGT35_T01b-pDONR221

K L V K G L L P R H M Q I I N E I N T R F K T
 399 400 401 402 403 404 405 406 407 408 409 410 411 412 413 414 415 416 417 418 419 420 421

5' TGGTAGAGAAAACCTGGCCGGGCGATGAAAAAGTGTGGGCCAAACTGGCGGTGGTGCACGACAAACAAGT
 3' ACCATCTCTTTTGGACCGGCCCGCTACTTTTTCACACCCGGTTTGACCGCCACCACGTGCTGTTTGTTC

6650

BGT35_T01b

BGT35_T01b-pDONR221

L V E K T W P G D E K V W A K L A V V H D K Q V
 422 423 424 425 426 427 428 429 430 431 432 433 434 435 436 437 438 439 440 441 442 443 444 445

5' GCATATGGCGAACCTGTGTGTGGTTGGCGGTTTCGCGGTGAACGGTGTTCGCGGCTGCACTCGGATCTG
 3' CGTATACCGCTTGGACACACACCAACCGCCAAAGCGCCACTTGCCACAACGCCGCGACGTGAGCCTAGAC

6720

BGT35_T01b

BGT35_T01b-pDONR221

H M A N L C V V G G F A V N G V A A L H S D L
 446 447 448 449 450 451 452 453 454 455 456 457 458 459 460 461 462 463 464 465 466 467 468

5' GTGGTGAAGATCTGTTCCCGGAATATCACCAGCTATGGCCGAACAAATTCCATAACGTCACCAACGGTA
 3' CACCACCTTCTAGACAAGGGCCTTATAGTGTCGATACCGGCTTGTTTAAGGTATTGCAGTGTTGCCAT

6790

BGT35_T01b

BGT35_T01b-pDONR221

V V K D L F P E Y H Q L W P N K F H N V T N G
 469 470 471 472 473 474 475 476 477 478 479 480 481 482 483 484 485 486 487 488 489 490 491

CspCI

5' TTACCCACGTCGCTGGATCAAACAGTGCAACCCGGCACTGGCGGCTCTGTTGGATAAATCACTGCAAAA
 3' AATGGGGTGCAGCGACCTAGTTTGTACGTTGGGCCGTGACCGCCGAGACAACCTATTTAGTGACGTTTT

6860

BGT35_T01b

BGT35_T01b-pDONR221

I T P R R W I K Q C N P A L A A L L D K S L Q K
 492 493 494 495 496 497 498 499 500 501 502 503 504 505 506 507 508 509 510 511 512 513 514 515

BGT35_T01b-pET16-DEST

CspCI'

5' AGAGTGGGCTAACGATCTCGATCAGCTGATCAATCTGGAAAAATTCGCTGATGATGCGAAAATTCGGTCAG
 3' TCTCACCCGATTGCTAGAGCTAGTCGACTAGTTAGACCTTTTAAAGCGACTACTACGCTTTAAGGCAGTC

6930

BGT35_T01b

BGT35_T01b-pDONR221

E W A N D L D Q L I N L E K F A D D A K F R Q
 516 517 518 519 520 521 522 523 524 525 526 527 528 529 530 531 532 533 534 535 536 537 538

5' CAATATCGCGAGATCAAGCAGGCGAATAAAGTCCGTCTGGCGGAGTTTGTGAAAGTTCGTACCGGTATTG
 3' GTTATAGCGCTCTAGTTCGTCCGCTTATTTTCAGGCAGACCGCCTCAAACACTTTC AAGCATGGCCATAAC

7000

BGT35_T01b

BGT35_T01b-pDONR221

Q Y R E I K Q A N K V R L A E F V K V R T G I
 539 540 541 542 543 544 545 546 547 548 549 550 551 552 553 554 555 556 557 558 559 560 561

5' AGATCAATCCACAGGCGATTTTCGATATTCAGATCAAACGTTTGCATGAGTACAAACGCCAGCACCTGAA
 3' TCTAGTTAGGTGTCCGCTAAAAGCTATAAGTCTAGTTTGCAAACGTA CT CATGTTTGCGGTCTGGACTT

7070

BGT35_T01b

BGT35_T01b-pDONR221

E I N P Q A I F D I Q I K R L H E Y K R Q H L N
 562 563 564 565 566 567 568 569 570 571 572 573 574 575 576 577 578 579 580 581 582 583 584 585

5' TCTGCTGCATATTTCTGGCGTTGTACAAAGAAATTCGTGAAAACCCGCAGGCTGATCGCGTACCGCGCGTC
 3' AGACGACGTATAAGACCGCAACATGTTTCTTTAAGCACTTTTGGGCGTCCGACTAGCGCATGGCGCGCAG

7140

BGT35_T01b

BGT35_T01b-pDONR221

L L H I L A L Y K E I R E N P Q A D R V P R V
 586 587 588 589 590 591 592 593 594 595 596 597 598 599 600 601 602 603 604 605 606 607 608

5' TTCTCTTTCGGCGCGAAAGCGGCACCGGGCTACTACCTGGCGAAGAATATTATCTTTGCGATCAACAAAG
 3' AAGGAGAAGCCGCGCTTTCGCCGTGGCCCGATGATGGACCGCTTCTTATAATAGAAACGCTAGTTGTTTC

7210

BGT35_T01b

BGT35_T01b-pDONR221

F L F G A K A A P G Y Y L A K N I I F A I N K
 609 610 611 612 613 614 615 616 617 618 619 620 621 622 623 624 625 626 627 628 629 630 631

