

BGT27_T18a-pET16-DEST

5' ttcttgaagacgaaagggcctcgtgatacgcctatTTTTATAGGTTAATGTCATGATAATAATGGTTTCT
 0 ++++++
 3' aagaacttctgcttccccggagcactatgCGGATAAAAATATCCAATTACAGTACTATTATTACCAAAGA

70

Zral
 AatII

5' tagacgtcaggtggcacttttcggggaaatgtgCGCGGAACCCCTATTTGTTATTTTTCTAAATACATT
 0 ++++++
 3' atctgcagtcaccCGTGAAAAGCCCTTTACACGCGCCTTGGGGATAAACAAATAAAAAGATTTATGTA

140

5' caaatatgtatccgctcatgagacaataaccctgataaatgcttcaataatattgaaaaaggaagagtat
 0 ++++++
 3' gtttatacataggcgagtactctgttattgggactatttacgaagtattataactTTTTCTTCTCATA

210

5' gagtattcaacatttccgtgtcgcccttattccctTTTTTGCGGCATTTTGCTTCTGTTTTTGCTCAC
 0 ++++++
 3' ctcataagttgtaaaggcacagcgggaataagggaaaaaacgCCGTAAAACGGAAGGACAAAAACGAGTG

280

Ap

5' ccagaaacgctggtgaaagtaaaagatgctgaagatcagttgggtgcacgagtggttacatcgaactgg
 0 ++++++
 3' ggtctttgCGACCCTTCTATTCTACGACTTCTAGTCAACCCACGTGCTCACCCAATGTAGCTTGACC

350

Ap

5' atctcaacagcggtaagatccttgagagtttccgccccgaagaacgTTTTCCAATGATGAGCACTTTTAA
 0 ++++++
 3' tagagttgtcgccattctaggaactctcaaaagcggggcttcttgcaaaaggtactactcgtgaaaatt

420

Ap

5' agttctgctatgtggcgcggtattatcccgtgTTGACGCCGGGCAAGAGCAACTCGGTGCGCGCATACAC
 0 ++++++
 3' tcaagacgatacaccgCGCCATAATAGGGCACAACCTGCGGCCGTTCTCGTTGAGCCAGCGGCGTATGTG

490

Ap

Scal

5' tattctcagaatgacttgggtgagtactcaccagtcacagaaaagcatcttacggatggcatgacagtaa
 0 ++++++
 3' ataagagtcttactgaaccaactcatgagtggtcagtgctTTTTCGTAGAATGCCTACCGTACTGTCAAT

560

Ap

PvuII

5' gagaattatgcagtgctgccataaccatgagtgataaacactgCGGCCAACTTACTTCTGACAACGATCGG
 0 ++++++
 3' ctcttaataacgTCACGACGGTATTGGTACTCACTATTGTGACGCCGGTTGAATGAAGACTGTTGCTAGCC

630

Ap

BGT27_T18a-pET16-DEST

5' gaaaatgacccagagcgctgccggcacctgtcctacgagttgcatgataaagaagacagtcataagtgcg 3640
 0 ++++++
 3' cttttactgggtctcgcgacggccgtggacaggatgctcaacgtactatcttctctgtcagatttcacgc

PshAI

5' gcgacgatagtcacatgccccgcgccaccggaaggagctgactgggttgaaggctctcaagggcatcggtc 3710
 0 ++++++
 3' cgctgctatcagtacggggcgcgggtggccttcctcgcactgacccaacttccgagagttcccgtagccag

5' gagatcccgggtgcctaataatgagtgagctaacttacattaattgcggtgcgctcactgcccgtttccagtc 3780
 0 ++++++
 3' ctctagggccacggattactcactcgattgaatgtaattaacgcaacgcgagtgacggggcgaagggtcag

Lac I

BsaXI'

5' gggaaacctgtcgtgccagctgcattaatgaatcggccaacgcgcggggagaggcggtttgcgatttggg 3850
 0 ++++++
 3' ccctttggacagcacggctcgacgtaataacttagccggttgcgcgccctctccgccaacgcataacc

Lac I

BsaXI

5' cgccaggggtgggtttttcttttcaccagtgagacgggcaacagctgattgccttcaccgcctggccctga 3920
 0 ++++++
 3' gcggtcccaccaaagaaaagtggtcactctgcccgttgtcgactaacgggaagtggcggaccgggact

Lac I

HpaI

5' gagagttgcagcaagcgggtccacgctgggttgccccagcaggcgaaaatcctgttgatgggtggttaacg 3990
 0 ++++++
 3' ctctcaacgtcgttcgccaggtgcgaccaaacggggctcgtccgcttttaggacaaactaccaccaattgc

Lac I

5' gcgggatataacatgagctgtcttcggtatcgtcgtatcccactaccgagatatccgcaccaacgcgcag 4060
 0 ++++++
 3' cgccctatattgtactcgacagaagccatagcagcatagggtgatggctctataggcgtgggtgcgcgctc

Lac I

BssHII

5' cccggactcggtaatggcgcgcattgcgccagcgcacatctgatcgttggcaaccagcatcgcagtgggga 4130
 0 ++++++
 3' gggcctgagccattaccgcgcgtaacgcgggtcgcggtagactagcaaccgttggctcgtagcgtcacct

Lac I

5' acgatgcctcattcagcatttgcattggttggtaaaccggacatggcactccagtcgccttcccgtt 4200
 0 ++++++
 3' tgctacgggagtaagtcgtaaacgtaccaaacacttttggcctgtaccgtgaggtcagcgggaagggcaa

Lac I

BGT27_T18a-pET16-DEST

5' cgcctatcggctgaatttgattgctgagtgagatatttatgccagccagccagacgcagacgcgcccagagac 4270
 o ++++++
 3' ggcgatagccgacttaaactaacgctcactctataaatacggctcggtcggctctgctctgcgcggtctctg

Lac I

5' agaacttaatgggcccgctaacagcgcgatttgctggtgacccaatgcgaccagatgctccacgcccagt 4340
 o ++++++
 3' tcttgaattaccggcgattgtcgcgctaaacgaccactgggttacgctggtctacgaggtgcggggtca

Lac I

PspOMI
 Apal
 BstEII

5' cgcgtaccgtcttcatgggagaaaataactggtgatgggtgctggtcagagacatcaagaataacg 4410
 o ++++++
 3' gcgcatggcagaagtaccctcttttattatgacaactaccacagaccagtctctgtagttctttattgc

Lac I

BclI

5' ccggaacattagtgcaggcagcttccacagcaatggcatcctggatccagcggatagttaatgatcag 4480
 o ++++++
 3' ggccctgtaatcacgtccgctcgaagggtgctgttaccgtaggaccagtaggtcgccctatcaattactagtc

Lac I

MluI

5' cccactgacgcgttgcgcgagaagattgtgcaccgcgctttacaggcttcgacgccgcttcggttctacc 4550
 o ++++++
 3' ggggtgactgcgcaacgcgctcttctaacacgtggcgcgaaatgtccgaagctgcgggcgaagcaagatgg

Lac I

5' atcgacaccaccagctggcaccagttgatcggcgcgagatttaatcgccgcgacaatttgcgacggcg 4620
 o ++++++
 3' tagctgtgggtggtgcgaccgtgggtcaactagccgcgctctaaattagcggcgctgttaaacgctgcccgc

Lac I

5' cgtgcagggccagactggaggtggcaacgccaatcagcaacgactgtttgcccgccagttggtgtgccac 4690
 o ++++++
 3' gcacgtcccggctgacctccaccgttgcggttagtcgcttgctgacaaacgggcggtcaacaacacggtg

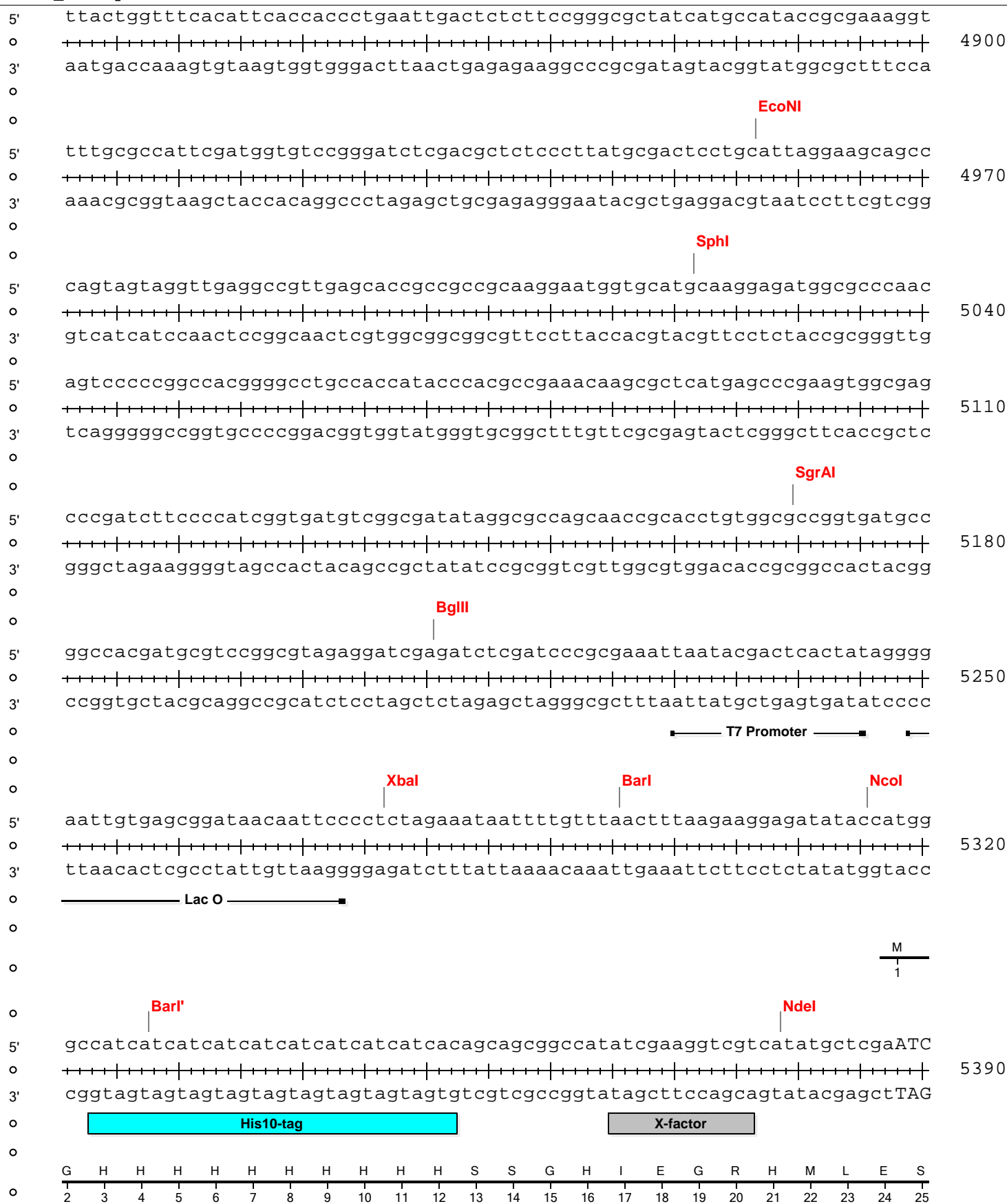
Lac I

5' gcgggtgggaatgtaattcagctccgccatcgccgcttccactttttcccgcggttttcgcagaaacgtgg 4760
 o ++++++
 3' cgccaacccttacattaagtcgaggcggtagcggcgaaaggtgaaaaagggcgcaaaagcgtctttgcacc

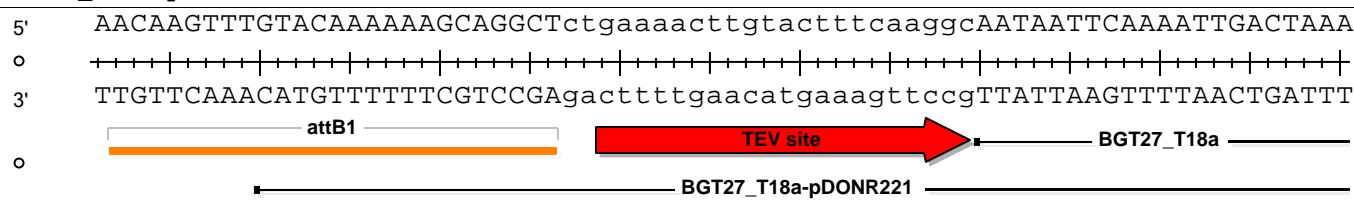
Lac I

5' ctggcctggttcaccacgcgggaaacggctctgataagagacaccggcatactctgcgacatcgtataacg 4830
 o ++++++
 3' gaccggaccaagtggtgcccctttgccagactattctctgtggccgatatgagacgctgtagcatattgc

BGT27_T18a-pET16-DEST

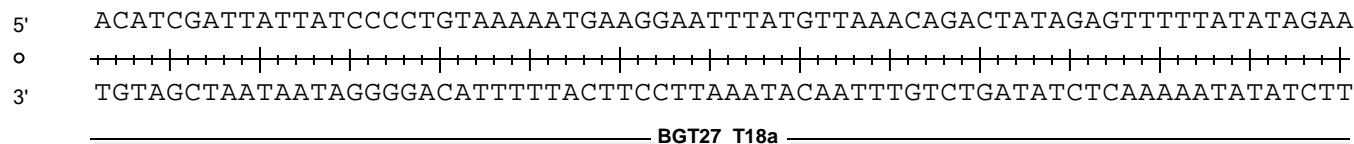


BGT27_T18a-pET16-DEST



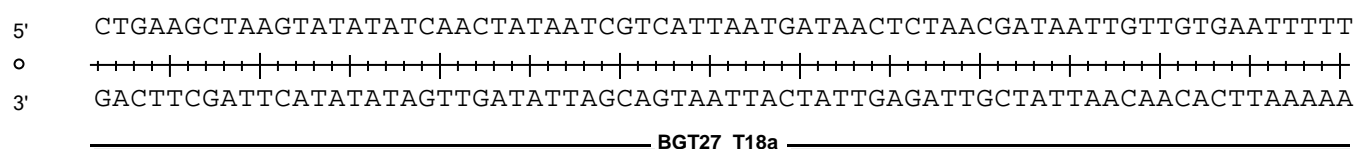
5460

T S L Y K K A G S E N L Y F Q G N N S K L T K
 26 27 28 29 30 31 32 33 34 35 36 37 38 39 40 41 42 43 44 45 46 47 48



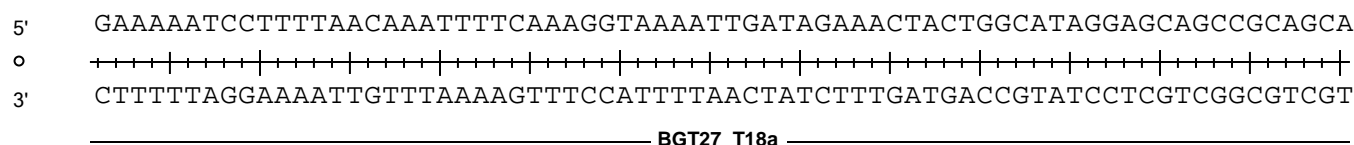
5530

T S I I I P C K N E G I Y V K Q T I E F L Y R
 49 50 51 52 53 54 55 56 57 58 59 60 61 62 63 64 65 66 67 68 69 70 71



5600

T E A K Y I S T I I V I N D N S N D N C C E F L
 72 73 74 75 76 77 78 79 80 81 82 83 84 85 86 87 88 89 90 91 92 93 94 95



5670

K N P F N K F S K V K L I E T T G I G A A A A
 96 97 98 99 100 101 102 103 104 105 106 107 108 109 110 111 112 113 114 115 116 117 118



5740

R N L G A T F A E N S E I L V F C D A H I T M
 119 120 121 122 123 124 125 126 127 128 129 130 131 132 133 134 135 136 137 138 139 140 141

BGT27_T18a-pET16-DEST

5' ACCAAAATTGGCTTAATATTCTTTTATCTGCCTTTAATGATAAAAAATGTAAGTGTAAATTTGCCAGGTAT
 3' TGGTTTTAACCGAATTATAAGAAAATAGACGGAAATTACTATTTTACATTCACATTAACGGGTCCATA

5810

BGT27_T18a

BGT27_T18a-pDONR221

N Q N W L N I L L S A F N D K N V S V I C P G I
 142 143 144 145 146 147 148 149 150 151 152 153 154 155 156 157 158 159 160 161 162 163 164 165

SbfI

5' CGGCCATTTTTCTCCTGCTAGTCCTGCAGGCTATGGTCAAAGCTTTAATGAGAGCTTTGAAACATATTGG
 3' GCCGGTAAAAAGAGGACGATCAGGACGTCCGATACCAGTTTCGAAATTACTCTCGAAACTTTGTATAACC

5880

BGT27_T18a

BGT27_T18a-pDONR221

G H F S P A S P A G Y G Q S F N E S F E T Y W
 166 167 168 169 170 171 172 173 174 175 176 177 178 179 180 181 182 183 184 185 186 187 188

SpeI

5' CTAAAAAAGCCACTGAATATAAAAAGAAGTTCCTACTAGTTCCTGGTGGTTGCATGGCTATAAAAAAAGAAA
 3' GATTTTTTCGGTGACTTATATTTTCTTCAAGGTGATCAAGGACCACCAACGTACCGATATTTTTTTCTTT

5950

BGT27_T18a

BGT27_T18a-pDONR221

L K K P L N I K E V P L V P G G C M A I K K E
 189 190 191 192 193 194 195 196 197 198 199 200 201 202 203 204 205 206 207 208 209 210 211

5' CCTTTGATGCAGTAGACGGCTTTGATCGAGTTTCCATAGTTGGGGCTTTGAAGATGTAGAACTTTCTAT
 3' GGAAACTACGTCATCTGCCGAAACTAGCTCCAAGGTATCAACCCGAAACTTCTACATCTTGAAAGATA

6020

BGT27_T18a

BGT27_T18a-pDONR221

T F D A V D G F D R G F H S W G F E D V E L S I
 212 213 214 215 216 217 218 219 220 221 222 223 224 225 226 227 228 229 230 231 232 233 234 235

5' AAAACTCTGGCTTTTCGGATATAAAATTTTGTACATCCTGCTGTTAAAGTTGGACACAAAATTTAGAAAA
 3' TTTTGAGACCGAAAAGCCTATATTTTAAAAACATGTAGGACGACAATTTCAACCTGTGTTTAAATCTTTT

6090

BGT27_T18a

BGT27_T18a-pDONR221

K L W L F G Y K I F V H P A V K V G H K F R K
 236 237 238 239 240 241 242 243 244 245 246 247 248 249 250 251 252 253 254 255 256 257 258

BGT27_T18a-pET16-DEST

SnaBI

5' ATACAACCCTATGATGTTGACCTAACGGAATTCCATTACAATAAAATTACGTATGGCATTTAGTCATTTTA
 3' TATGTTGGGATACTACAACCTGGATTGCCTTAAGGTAATGTTATTTAATGCATACCGTAAATCAGTAAAAT

6160

BGT27_T18a

BGT27_T18a-pDONR221

I Q P Y D V D L T E F H Y N K L R M A F S H F
 259 260 261 262 263 264 265 266 267 268 269 270 271 272 273 274 275 276 277 278 279 280 281

5' ATAAGGAAAGAATCAATAAAATAGTTAGTTCCTTCATAATTGCTCTAATTTTAAAGCTATTTTAGATAA
 3' TATTCCTTTCTTAGTTATTTTATCAATCAAGGGAAGTATTAACGAGATTAAAATTTTCGATAAAAATCTATT

6230

BGT27_T18a

BGT27_T18a-pDONR221

N K E R I N K I V S S L H N C S N F K A I L D K
 282 283 284 285 286 287 288 289 290 291 292 293 294 295 296 297 298 299 300 301 302 303 304 305

PsiI

5' AATAACTTTAAGTGATACTTATAATCAACGTATAGCTTACTTTAAACGTCGTCTATATGATGATAATTGG
 3' TTATTGAAATTCACTATGAATATTAGTTGCATATCGAATGAAATTTGCAGCAGATATACTACTATTAACC

6300

BGT27_T18a

BGT27_T18a-pDONR221

I T L S D T Y N Q R I A Y F K R R L Y D D N W
 306 307 308 309 310 311 312 313 314 315 316 317 318 319 320 321 322 323 324 325 326 327 328

BamHI

5' TTCTTCGATAAAATTTAATATAACCCTTCTAGGACCCAGCTTCTTGTACAAAGTGGTTGATtcgaggatcc
 3' AAGAAGCTATTTAAATTATATGGGAAGATCCTGGGTCGAAAGAACATGTTTCACCAACTAagctcctag

6370

BGT27_T18a

attB2

BGT27_T18a-pDONR221

F F D K F N I P F
 329 330 331 332 333 334 335 336 337 338

BlnI

5' ggctgctaacaaagcccgaaaggaagctgagttggctgctgccaccgctgagcaataactagcataacc
 3' ccgacgattgtttcgggctttccttcgactcaaccgacgacggtggcgactcgttattgatcgtattggg

6440

T7 Terminator

5' cttggggcctctaacgggtcttgaggggttttttgctgaaaggaggaactatatccggatatcccgcaa
 3' gaaccccgagatttgcccagaactccccaaaaaacgactttcctccttgatataggcctatagggcgtt

6510

T7 Terminator

BGT27_T18a-pET16-DEST

```
5'   gagggcccggcagtagccggcataaccaagcctatgcctacagcatccagggtgacgggtgccgaggatgacg
o   ++++++|+++++|+++++|+++++|+++++|+++++|+++++|+++++|+++++|+++++|+++++|+++++|+++++|
3'   ctccggggccgtagcggccgtagtgggttcggatacggatgtcgtagggtcccactgccacgggtcctactgc
o
5'   atgagcgattgttagatttcatacacgggtgcctgactgcgtagcaatttaactgtgataaactaccgc
o   ++++++|+++++|+++++|+++++|+++++|+++++|+++++|+++++|+++++|+++++|+++++|+++++|+++++|
3'   tactcgcgtaacaatctaaagtatgtgccacggactgacgcaatcgtaaattgacactatattgatggcg
o
5'   attaaagcttatcgatgataagctgtcaaacatgagaa
o   ++++++|+++++|+++++|+++++|+++++|+++++|+++++|+++++
3'   taatttcgaatagctactattcgacagtttgtactctt
o
```