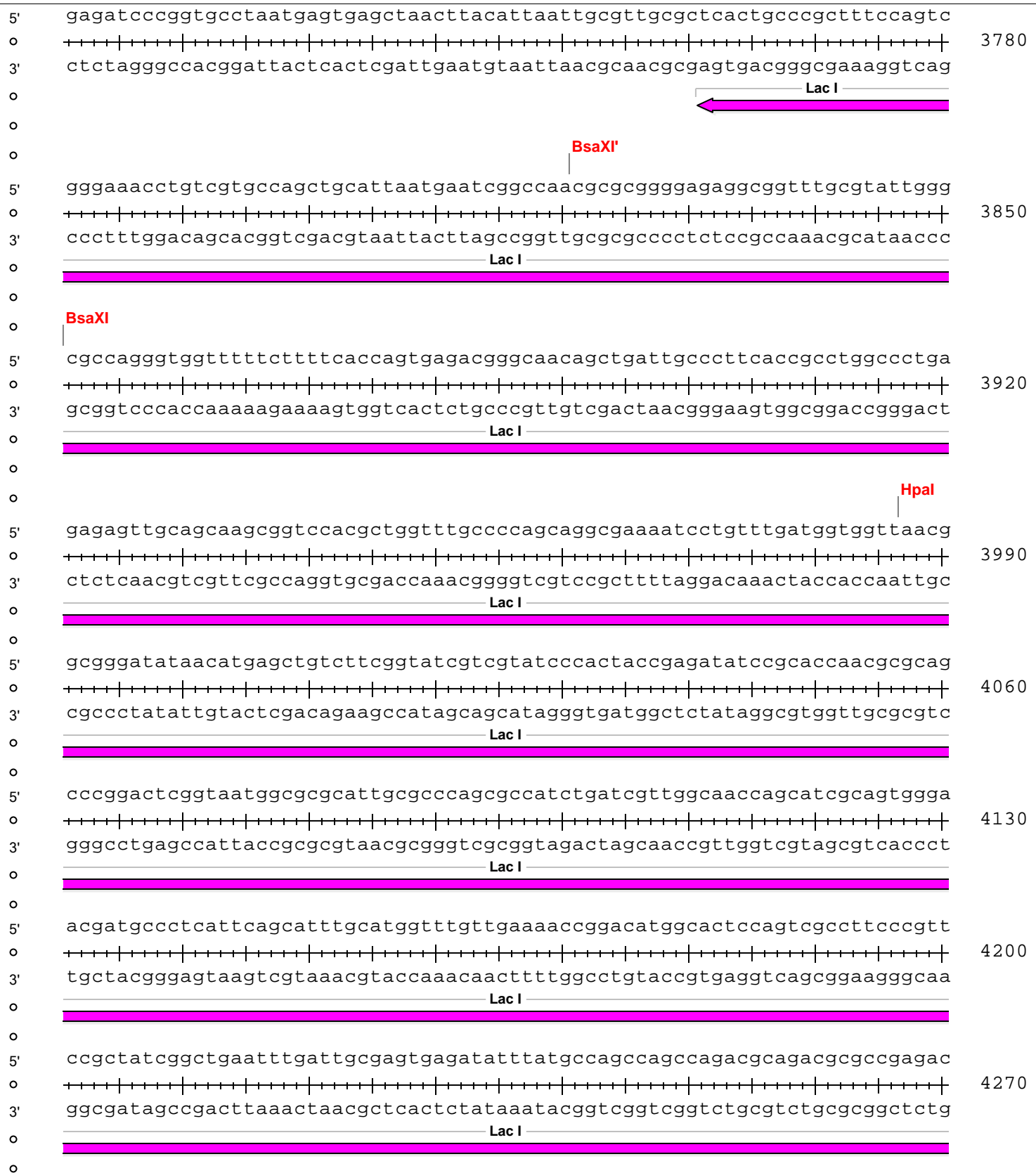


BGT25_T02a2-pET16-DEST



o
5' agaacttaatgggcccgctaacagcgcgatttgcgtggtgacccaatgcgaccagatgctccacgcccagt 4340
o
3' tcttgaattaccggcgattgtcgcgctaaacgaccactgggttacgctggtctacgaggtgcggggtca
o
Lac I
o
5' cgcgtaccgtcttcatgggagaaaataataactggtgatgggtgctctggtcagagacatcaagaaataacg 4410
o
3' gcgcatggcagaagtaccctcttttattatgacaactaccacagaccagtctctgtagttctttattgc
o
Lac I
o
5' ccggaacattagtgaggcagcttccacagcaatggcatcctggatccagcggatagttaatgatcag 4480
o
3' ggccctgtaatcacgtccgtcgaagggtgctggtaccgtaggaccagtaggtcgccatcaataactagtc
o
Lac I
o
o
o
o
5' cccactgacgcgtgcgcgagaagattgtgcaccgcccgtttacaggcttcgacgccgcttcgttctacc 4550
o
3' ggggtgactgcgcaacgcgctcttctaacacgtggcgggcgaatgtccgaagctgcgggcgaagcaagatgg
o
Lac I
o
5' atcgacaccaccagctggcaccagttgatcggcgcgagatttaatcgcccgacaaatttgcgacggcg 4620
o
3' tagctggtggtgcgaccgtgggtcaactagccgcgctctaaattagcggcgctgttaaagcgtgccgc
o
Lac I
o
5' cgtgcagggccagactggaggtggcaacgccaatcagcaacgactgtttgcccgccagttggtgtgccac 4690
o
3' gcacgtcccggctgacctccaccgttgcggttagtcggtgctgacaaacgggcggtcaacaacacggtg
o
Lac I
o
5' gcggttgggaatgtaattcagctccgccatcgccgcttccactttttcccgcggttttcgcagaaacgtgg 4760
o
3' cgccaacccttacattaagtgcgagggcggtagcggcgaaggtgaaaaagggcgcaaaagcgtctttgcacc
o
Lac I
o
5' ctggcctggttcaccacgcgggaaacggctctgataagagacaccggcatactctgcgacatcgtataacg 4830
o
3' gaccggaccaagtgggtgcgccctttgccagactattctctgtggccgatatgagacgctgtagcatattgc
o
5' ttactggtttcacattcaccacctgaattgactctctccgggcgctatcatgccataaccgcgaaaggt 4900
o
3' aatgaccaagtgtaagtgggtgggacttaactgagagaaggcccgcatagtagcggatggcgctttcca
o
5' tttgcgccattcgatgggtgctccgggatctcgacgctctcccttatgcgactcctgcattaggaagcagcc 4970
o
3' aaacgcggttaagctaccacaggccctagagctgcgagaggggaatacgtgaggacgtaatccttcgctcgg
o

0
 5' cagtagtaggttgaggccggtgagcaccgcccgcgcaaggaatggtgcatgcaaggagatggcgcccaac
 0
 3' gtcacatccaactccggcaactcgtggcgggcggttccttaccacgtacgttcctctaccgcggttg

5040

SphI

0
 5' agtccccggccacggggcctgccaccatacccacgccgaacaagcgctcatgagcccgaagtggcgag
 0
 3' tcagggggccggtgccccggacggtgggatgggtgcggtttgttcgagagtactcgggcttcaccgctc

5110

SgrAI

0
 5' cccgatcttccccatcggatggtcggcgatataggcgccagcaaccgcacctgtggcgccggtgatgcc
 0
 3' gggctagaaggggtagccactacagccgctatatccgcggtcgttggcgtggacaccgcgccactacgg

5180

0
 5' ggccacgatgctcggcgtagaggatcgagatctcgatcccgcgaaattaatacgactcactatagggg
 0
 3' ccggtgctacgcaggccgcatctccttagctctagagctagggcgctttaattatgctgagtgatatcccc

5250

T7 Promoter

0
 5' aattgtgagcggataacaattcccctctagaataaattttgtttaactttaagaaggagatataccatgg
 0
 3' ttaacactcgcctattgtaaggggagatctttattaaacaaattgaaattcttcctctatatggtacc

5320

XbaI

BamI

Lac O

M
1

0
 5' gccatcatcatcatcatcatcatcacagcagcggccatatcgaaggcgtcatatgctcgaATC
 0
 3' cggtagtagtagtagtagtagtagtagtagtgcgctcgccggtatagcttcacagcagtatacgagctTAG

5390

BamI

NdeI

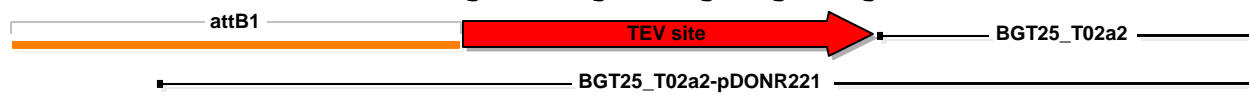
His10-tag

X-factor

G H H H H H H H H H S S G H I E G R H M L E S
 2 3 4 5 6 7 8 9 10 11 12 13 14 15 16 17 18 19 20 21 22 23 24 25

0
 5' AACAAAGTTTGTACAAAAAAGCAGGCTctgaaaacttgtactttcaaggcAGCACCATCGGCCTGTGCATG
 0
 3' TTGTTCAAACATGTTTTTTCGTCCGAgacttttgaacatgaaagttccgTCGTGGTAGCCGGACACGTAC

5460



T S L Y K K A G S E N L Y F Q G S T I G L C M
 26 27 28 29 30 31 32 33 34 35 36 37 38 39 40 41 42 43 44 45 46 47 48

BGT25_T02a2-pET16-DEST

5' ATTGTCAAGAACGAGACGAAGGTCATCCTGCAATGCCTCGCCAGCGTGTCTCCCCCTTGTGCGACTACGTGC
 3' TAACAGTTCTTGCTCTGCTTCCAGTAGGACGTTACGGAGCGGTGCGCACGAGGGGGAACAGCTGATGCACG

5530

BGT25_T02a2

BGT25_T02a2-pDONR221

I V K N E T K V I L Q C L A S V L P L V D Y V
 49 50 51 52 53 54 55 56 57 58 59 60 61 62 63 64 65 66 67 68 69 70 71

Agel

5' TCATCGTCGACACCGGTTCCGAGGACGGCACGCAAGACCTGATACGCGGCTTTCTCGCCGATAACGGTGT
 3' AGTAGCAGCTGTGGCCAAGGCTCCTGCCGTGCGTTCTGGACTATGCGCCGAAAGAGCGGCTATTGCCACA

5600

BGT25_T02a2

BGT25_T02a2-pDONR221

L I V D T G S E D G T Q D L I R G F L A D N G V
 72 73 74 75 76 77 78 79 80 81 82 83 84 85 86 87 88 89 90 91 92 93 94 95

5' CCAAGGCGCTGTCATTGACGAGCCATGGCGGGACTTCGCGTACAACCGGACCTTCGCCCTTGAACGATTG
 3' GGTTCGCGACAGTAACTGCTCGGTACCGCCCTGAAGCGCATGTTGGCCTGGAAGCGGGAACCTTGCTAAC

5670

BGT25_T02a2

BGT25_T02a2-pDONR221

Q G A V I D E P W R D F A Y N R T F A L E R L
 96 97 98 99 100 101 102 103 104 105 106 107 108 109 110 111 112 113 114 115 116 117 118

5' CGTAAAGTCGAGACTGTCGACTATGCAATGATCATCGACGCGGACGATGTTCTGATCCGGGACGCCGACT
 3' GCATTTACAGCTCTGACAGCTGATACGTTACTAGTAGCTGCGCCTGCTACAAGACTAGGCCCTGCGGCTGA

5740

BGT25_T02a2

BGT25_T02a2-pDONR221

R K V E T V D Y A M I I D A D D V L I R D A D
 119 120 121 122 123 124 125 126 127 128 129 130 131 132 133 134 135 136 137 138 139 140 141

5' TCGATCCGATCAGGTTCAAGTCGCAGATGGAACACGATTTATACGACGTCGAGGTGTTACATGGTGGCAT
 3' AGCTAGGCTAGTCCAAGTTCAGCGTCTACCTTGTGCTAAATATGCTGCAGCTCCACAATGTACCACCGTA

5810

BGT25_T02a2

BGT25_T02a2-pDONR221

F D P I R F K S Q M E H D L Y D V E V L H G G I
 142 143 144 145 146 147 148 149 150 151 152 153 154 155 156 157 158 159 160 161 162 163 164 165

BGT25_T02a2-pET16-DEST

5' TTCGTTTTATCGCCCGCAGATCTGCCGCAACCGTCTGCCGTTTCGCCTTCAAGGGCGTCCTGCACGAATAT
 3' AAGCAAATAGCGGGCGTCTAGACGGCGTTGGCAGACGGCAAGCGGAAGTTCCCGCAGGACGTGCTTATA

_____ BGT25_T02a2 _____

_____ BGT25_T02a2-pDONR221 _____

5880

S F Y R P Q I C R N R L P F A F K G V L H E Y
 166 167 168 169 170 171 172 173 174 175 176 177 178 179 180 181 182 183 184 185 186 187 188

XhoI

5' CTCGAGGCCCTCCTGGCCATCTCACGCGGGAGACCGCCAAGGGTTTTTCGCGTGGCGACGGGGCGTGGCG
 3' GAGCTCCGGGGAGACCGGTAGAGTGCGCCCTCTGGCGGTTCCCAAAGCGCACCGCTGCCCGCACCCG

_____ BGT25_T02a2 _____

_____ BGT25_T02a2-pDONR221 _____

5950

L E A P P G H L T R E T A K G F R V A T G R G
 189 190 191 192 193 194 195 196 197 198 199 200 201 202 203 204 205 206 207 208 209 210 211

BaeI

BaeI'

5' GAGCACGCAGTCAAAACCCACGAAAGTACCAGGACGACTCGGCCGTTCTTGAAAATGCGCTTGCAACGGA
 3' CTCGTGCGTCAGTTTTGGGTGCTTTCATGGTCCTGCTGAGCCGGCAAGAACTTTTACGCGAACGTTGCCT

_____ BGT25_T02a2 _____

_____ BGT25_T02a2-pDONR221 _____

6020

G A R S Q N P R K Y Q D D S A V L E N A L A T E
 212 213 214 215 216 217 218 219 220 221 222 223 224 225 226 227 228 229 230 231 232 233 234 235

5' GACCGACCCCTTTCTTGTTTTCGCGATACACCTTCTATCTGGCGCAGAGCTACAGGGATTCCGGCGAGCGT
 3' CTGGCTGGGGAAAGAACAAGCGCTATGTGGAAGATAGACCGCGTCTCGATGTCCCTAAGGCCGCTCGCA

_____ BGT25_T02a2 _____

_____ BGT25_T02a2-pDONR221 _____

6090

T D P F L V S R Y T F Y L A Q S Y R D S G E R
 236 237 238 239 240 241 242 243 244 245 246 247 248 249 250 251 252 253 254 255 256 257 258

BseRI

5' GAAAAATCACTCGCGAACTATCTGAAGCGCGCCGATCTAGGTTTTTGGGACGAGGAGGTCTATGTTCAGCC
 3' CTTTTTAGTGAGCGCTTGATAGACTTCGCGCGGCTAGATCCAAAACCCTGCTCCTCCAGATACAGTCGG

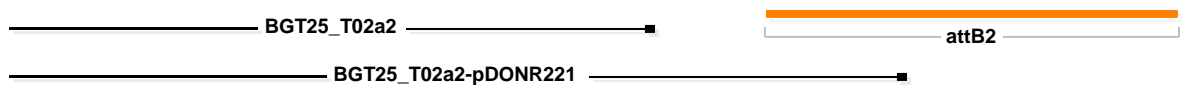
_____ BGT25_T02a2 _____

_____ BGT25_T02a2-pDONR221 _____

6160

E K S L A N Y L K R A D L G F W D E E V Y V S
 259 260 261 262 263 264 265 266 267 268 269 270 271 272 273 274 275 276 277 278 279 280 281

o
5' GTGGCCAACGCTCGCTTCGCCACCGGCAAGCTTCCGTAGGACCCAGCTTTCTTGTACAAAGTGGTTGATt 6580
o
3' CACCGGTTGCGAGCGAAGCGGTGGCCGTTTCAAGGCATCCTGGGTCGAAAGAACATGTTTCACCAACTAa
o
o
o
o
o
o
o



V A N A R F A T G K L P .
399 400 401 402 403 404 405 406 407 408 409 410 411

o
o
5' cgaggatccggctgctaacaagcccgaaaggaagctgaggtggctgctgccaccgctgagcaataacta 6650
o
3' gctcctagggcgcgacgattgtttcgggctttccttcgactcaaccgacgacggtggcgactcgttattgat
o
o
o
o



5' gcataacccttggggcctctaaacgggtcttgaggggttttttggctgaaaggaggaactatatccggat 6720
o
3' cgtattggggaaccccgagatttgcccagaactccccaaaaaacgactttcctccttgatataggccta
o
o
o
o



5' atcccgcaagaggcccgccagctaccggcataaccaagcctatgcctacagcatccagggtgacgggtgccg 6790
o
3' tagggcgttctccgggccgctcatggccgattgggttcggatacggatgtcgtaggtcccactgccacggc
o
o
o
o

5' aggatgacgatgagcgcattgttagatttcatacacggtgccctgactgcgcttagcaatttaactgtgata 6860
o
3' tcctactgctactcgcgtaacaatctaaagtatgtgccacggactgacgcaatcgtaaattgacactat
o
o
o
o

o
o
5' aactaccgcattaaagcttatcgatgataagctgtcaaacatgagaa 6907
o
3' ttgatggcgtaatttcgaatagctactatcgcacagtttgactcct
o
o
o

