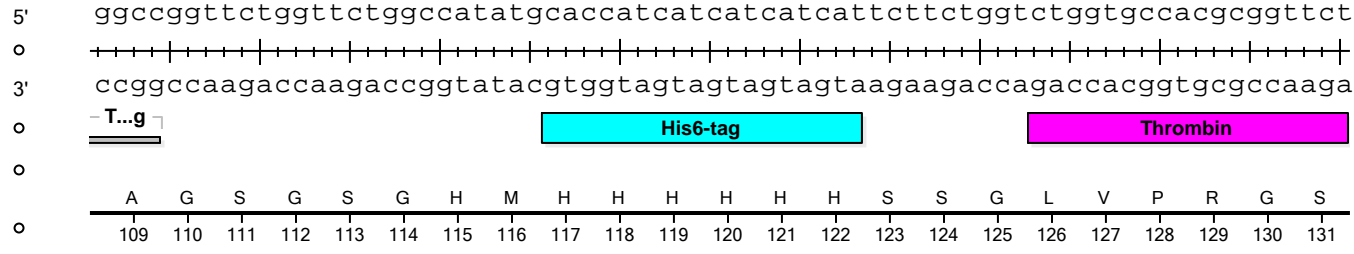
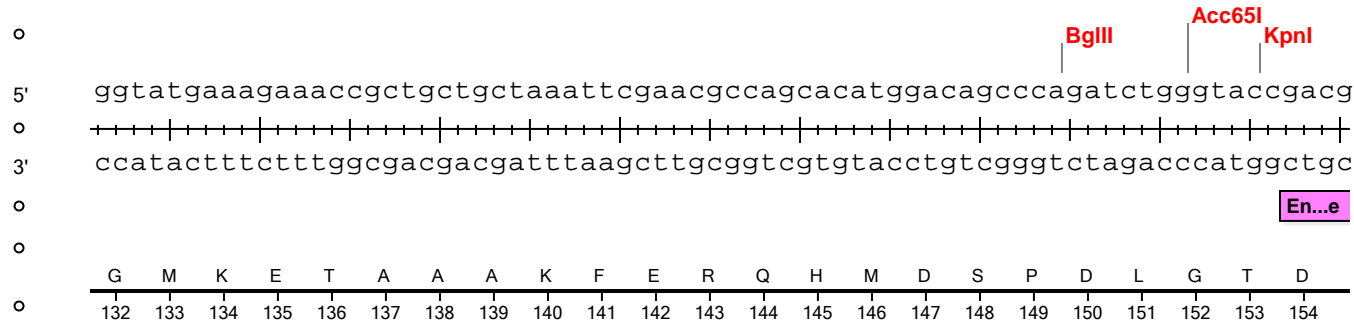


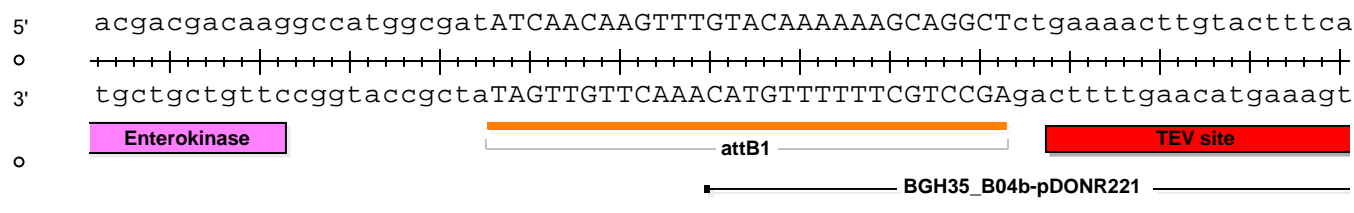
BGH35_B04b-pET32-DEST



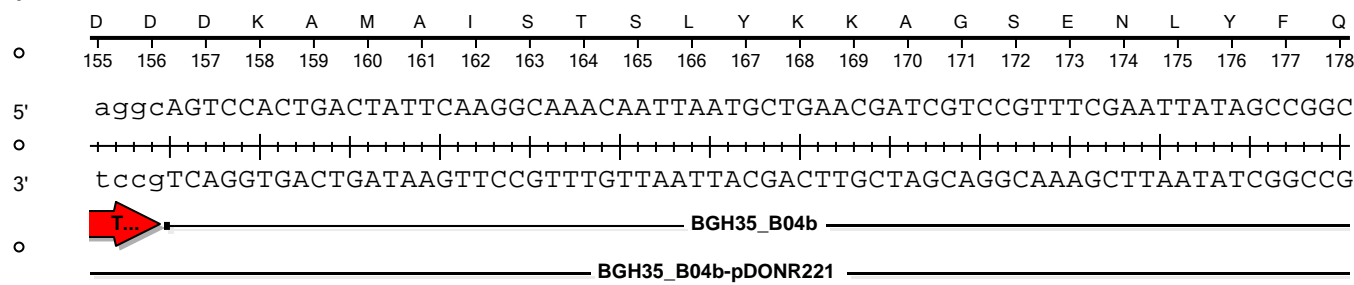
5600



5670



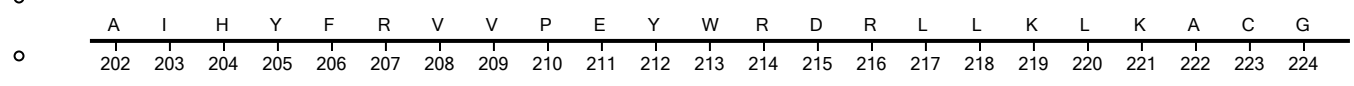
5740



5810



5880



BGH35_B04b-pET32-DEST

5' AACGATAAAACGTATCTCAACTACCTGAAGGAAGCACTCGTCAAACGCGGCGTGGATGTACTGCTATTTA
 0 ++++++
 3' TTGCTATTTTGCATAGAGTTGATGGACTTCCTTCGTGAGCAGTTTGCGCCGCACCTACATGACGATAAAT

6300

BGH35_B04b

BGH35_B04b-pDONR221

N D K T Y L N Y L K E A L V K R G V D V L L F
 342 343 344 345 346 347 348 349 350 351 352 353 354 355 356 357 358 359 360 361 362 363 364

5' CCTCTGACGGACCGGAAGATTTTATGCTGCAAGGCGGCATGGTTGAAGGCGTATGGGAAACGGTTAATTT
 0 ++++++
 3' GGAGACTGCCTGGCCTTCTAAAATACGACGTTCCGCCGTACCAACTTCCGCATACCCTTTGCCAATTTAA

6370

BGH35_B04b

BGH35_B04b-pDONR221

T S D G P E D F M L Q G G M V E G V W E T V N F
 365 366 367 368 369 370 371 372 373 374 375 376 377 378 379 380 381 382 383 384 385 386 387 388

BbvCI

BsmI

5' CGGATCCCGTTTCGGCTGAGGCATTCGCCAAGCTGCAGGAATATCAGCCGGATCAGCCGCTTATGTGCATG
 0 ++++++
 3' GCCTAGGGCAAGCCGACTCCGTAAGCGGTTTCGACGTCCTTATAGTCGGCCTAGTCGGCGAATACACGTAC

6440

BGH35_B04b

BGH35_B04b-pDONR221

G S R S A E A F A K L Q E Y Q P D Q P L M C M
 389 390 391 392 393 394 395 396 397 398 399 400 401 402 403 404 405 406 407 408 409 410 411

5' GAATTTTGGAAACGGCTGGTTCGACCACTGGGGGGAGACTCATCATAACCCGCGGCGCCGCGGATGTTGCC
 0 ++++++
 3' CTTAAAACCTTGCCGACCAAGCTGGTGACCCCCCTCTGAGTAGTATGGGCGCCGCGGCGCCTACAACGGG

6510

BGH35_B04b

BGH35_B04b-pDONR221

E F W N G W F D H W G E T H H T R G A A D V A
 412 413 414 415 416 417 418 419 420 421 422 423 424 425 426 427 428 429 430 431 432 433 434

5' TGGTGCTTGACGAGATGCTGGCAGCCGGTGCTTCGGTCAATTTCTATATGTTCCATGGGGGGACCAACTT
 0 ++++++
 3' ACCACGAACTGCTCTACGACCGTCGGCCACGAAGCCAGTTAAAGATATAACAAGGTACCCCCCTGGTTGAA

6580

BGH35_B04b

BGH35_B04b-pDONR221

L V L D E M L A A G A S V N F Y M F H G G T N F
 435 436 437 438 439 440 441 442 443 444 445 446 447 448 449 450 451 452 453 454 455 456 457 458

BGH35_B04b-pET32-DEST

SbfI
BspMI

5' TCAACCTGCAGGAGGTTTCATGACCGCGCGCTTATCTTTATTGACGGCGTGTTCAAAGGCGTTATTGAACG
 3' AGTTGGACGTCTCTCCAAGTACTGGCGCGCGAATAGAAATAACTGCCGCACAAGTTTCCGCAATAACTTGC

7000

BGH35_B04b

BGH35_B04b-pDONR221

L N L Q E V H D R A L I F I D G V F K G V I E R
 575 576 577 578 579 580 581 582 583 584 585 586 587 588 589 590 591 592 593 594 595 596 597 598

5' CTCCAACCCGGAGCATGATCTCGTATTTGACGTACCGCCCGGCGGCGTGGAGCTGGCCATTCTCGTTCGAG
 3' GAGGTGGGCTCGTACTAGAGCATAAACTGCATGGCGGGCCGCCGCACCTCGACCGGTAAGAGCAGCTC

7070

BGH35_B04b

BGH35_B04b-pDONR221

S N P E H D L V F D V P P G G V E L A I L V E
 599 600 601 602 603 604 605 606 607 608 609 610 611 612 613 614 615 616 617 618 619 620 621

BsiWI

5' AATATGGGACGGATCAATTACGGTCCGCACATGAAGGATGTTAAGGGAATTACCGAAGGCGTACGTTTCG
 3' TTATACCCTGCCTAGTTAATGCCAGGCGTGTACTTCTACAATTCCCTTAATGGCTTCCGCATGCAAAGC

7140

BGH35_B04b

BGH35_B04b-pDONR221

N M G R I N Y G P H M K D V K G I T E G V R F
 622 623 624 625 626 627 628 629 630 631 632 633 634 635 636 637 638 639 640 641 642 643 644

5' GACAGCAGTTTCTGTTAATTGGACGGTGCGCCCGTTGCCGCTGGATGACCTGTCCAAACTGCAATTTTC
 3' CTGTTCGTCAAGGACAAATTAACCTGCCACGCGGGCAACGGCGACCTACTGGACAGGTTTGACGTTAAAAG

7210

BGH35_B04b

BGH35_B04b-pDONR221

G Q Q F L F N W T V R P L P L D D L S K L Q F S
 645 646 647 648 649 650 651 652 653 654 655 656 657 658 659 660 661 662 663 664 665 666 667 668

5' TGCTTTAAGCAGTCAACCGTGCCTTCAGCCGTCTTCTATCGGGGCGAGTTTCGAAGTGGATGAGCCGGCC
 3' ACGAAATTCGTCAGTTGGCACGGAAGTCGGCAGGAAGATAGCCCCGCTCAAGCTTCACCTACTCGGCCGG

7280

BGH35_B04b

BGH35_B04b-pDONR221

A L S S Q P C L Q P S F Y R G E F E V D E P A
 669 670 671 672 673 674 675 676 677 678 679 680 681 682 683 684 685 686 687 688 689 690 691

BGH35_B04b-pET32-DEST

5' ttttttgctgaaaggaggaactatatccggat
o +++++|++++|++++|++++|++++|++++|++
3' aaaaaacgactttcctccttgatataggccta
o — T7 ...or —
o

7732