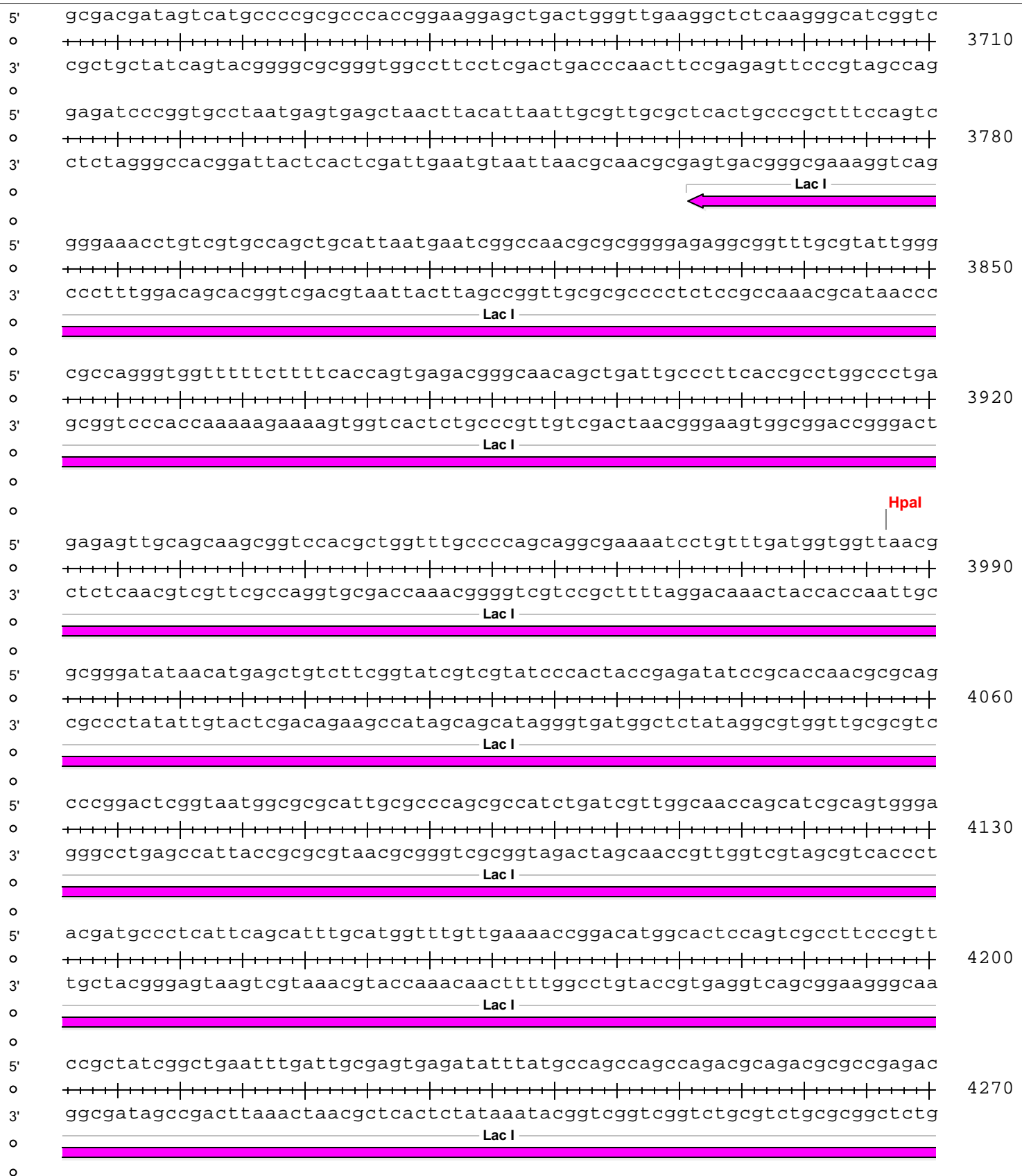
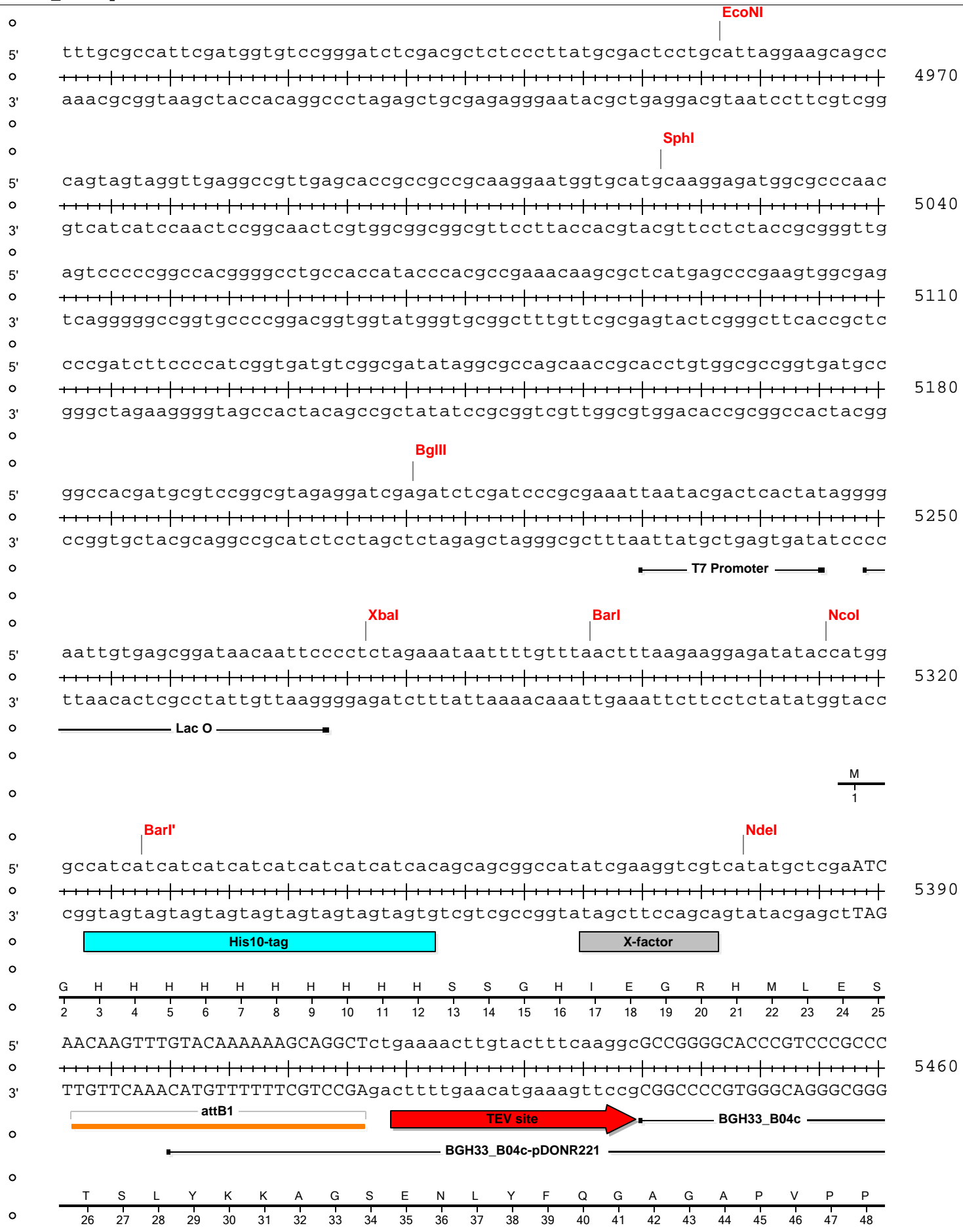


BGH33_B04c-pET16-DEST



o
5' agaacttaatgggcccgctaacagcgcgatttgctggtgacccaatgcgaccagatgctccacgcccagt 4340
o
3' tcttgaattaccggcgattgtcgcgctaaacgaccactgggttacgctggtctacgaggtgcggggtca
o
Lac I
o
5' cgcgtaccgtcttcatgggagaaaataatactggtgatgggtgctctggtcagagacatcaagaaataacg 4410
o
3' gcgcatggcagaagtaccctcttttattatgacaactaccacagaccagtctctgtagttctttattgc
o
Lac I
o
5' ccggaacattagtgcaggcagcttccacagcaatggcatcctggtcatccagcggatagttaatgatcag 4480
o
3' ggccttgtaatcacgtccgctcgaagggtgctgcttaccgtaggaccagtaggtcgctatcaattactagtc
o
Lac I
o
5' cccactgacgcgttgcgcgagaagattgtgcaccgcccgtttacaggcttcgacgccgcttcgttctacc 4550
o
3' ggggtgactgcgcaacgcgctcttctaacacgctggcgggcgaatgtccgaagctgcggcgaagcaagatgg
o
Lac I
o
5' atcgacaccaccagctggcaccagttgatcggcgcgagatttaatcgccgcgacaatttgcgacggcg 4620
o
3' tagctgtgggtggtgcgaccgtgggtcaactagccgcgctctaaattagcggcgctgttaaacgctgccgc
o
Lac I
o
5' cgtgcagggccagactggaggtggcaacgccaatcagcaacgactgtttgcccgccagttggtgtgccac 4690
o
3' gcacgtcccggctgacctccaccgttgcggttagctcgttgctgacaaacgggcggtcaacaacacggtg
o
Lac I
o
5' gcggttgggaatgtaattcagctccgccatcgccgcttccacttttcccgcgcttttcgcagaaacgtgg 4760
o
3' cgccaacccttacattaagtgcaggcggtagcggcgaaggtgaaaaagggcgcaaagcgtctttgcacc
o
Lac I
o
5' ctggcctggttcaccacgcgggaaacgggtctgataagagacaccggcatactctgcgacatcgtataacg 4830
o
3' gaccggaccaagtgggtgcgcccttggccagactattctctgtggccgatatgagacgctgtagcatattgc
o
5' ttactggtttcacattcaccaccctgaattgactctcttccgggcgctatcatgccataccgcgaaaggt 4900
o
3' aatgaccaaagtgtaagtgggtgggacttaactgagagaaggcccgcgatagtagcggatggtgctttcca
o



BGH33_B04c-pET16-DEST

5' GGCGGCGAGCCGCTCTACACGAGCAGGACCTCGCCGTGAACGGCAGGGAGGGCTTTCCGAAC TACCGCA
 3' CCGCCGCTCGGCGAGATGTGCCTCGTCCTGGAGCGGCACTTGCCGTCCTCCCGAAAGGCTTGATGGCGT

5530

BGH33_B04c

BGH33_B04c-pDONR221

G G E P L Y T E Q D L A V N G R E G F P N Y R
 49 50 51 52 53 54 55 56 57 58 59 60 61 62 63 64 65 66 67 68 69 70 71

BsiWI

AgeI

5' TCCCAGCGCTGACCGTCACGCCCGACGGGGACCTGCTGGCCTCGTACGACGGCCGCCCGACCGGTATCGA
 3' AGGGTCGCGACTGGCAGTGC GGGCTGCCCTGGACGACCGGAGCATGCTGCCGCGGGCTGGCCATAGCT

5600

BGH33_B04c

BGH33_B04c-pDONR221

I P A L T V T P D G D L L A S Y D G R P T G I D
 72 73 74 75 76 77 78 79 80 81 82 83 84 85 86 87 88 89 90 91 92 93 94 95

5' CGCGCCCGGCCCAACTCCATCCTCCAACGCCGACCGACGGCGGCCGGACGTGGGGCGAGCAACAG
 3' GCGCGGGCCGGGTTGAGGTAGGAGTTGCGGCGTCTGGCTGCCGCCGGCCTGCACCCCGCTCGTTGTC

5670

BGH33_B04c

BGH33_B04c-pDONR221

A P G P N S I L Q R R S T D G G R T W G E Q Q
 96 97 98 99 100 101 102 103 104 105 106 107 108 109 110 111 112 113 114 115 116 117 118

5' GTCGTCAGCGCCGGCCAGACCACCGCGCCGATCAAGGGTTCTCCGACCCAGCTACCTTGTCGACCGGG
 3' CAGCAGTCGCGGCCGGTCTGGTGGCGCGGCTAGTTCCCAAGAGGCTGGGGTCGATGGAACAGCTGGCCC

5740

BGH33_B04c

BGH33_B04c-pDONR221

V V S A G Q T T A P I K G F S D P S Y L V D R
 119 120 121 122 123 124 125 126 127 128 129 130 131 132 133 134 135 136 137 138 139 140 141

5' AAACCGGGACCATCTTCAACTTCCACGTCTACTCCCAGCGGCAGGGCTTCGCCGGCAGCCGGCCCGGCAC
 3' TTTGGCCCTGGTAGAAGTTGAAGGTGCAGATGAGGGTCGCCGTCCCGAAGCGGCCGTTCGGCCGGGCCGTG

5810

BGH33_B04c

BGH33_B04c-pDONR221

E T G T I F N F H V Y S Q R Q G F A G S R P G T
 142 143 144 145 146 147 148 149 150 151 152 153 154 155 156 157 158 159 160 161 162 163 164 165

BGH33_B04c-pET16-DEST

SexAI

5' CGACCCGGCAGACCCCAACGTGCTCCACGCCAACGTCGCGACCTCGACCGACGGCGGTCTGACCTGGTTCG
 3' GCTGGGCCGTCTGGGGTTGCACGAGGTGCGGTTGCAGCGCTGGAGCTGGCTGCCGCCAGACTGGACCAGC

5880

BGH33_B04c

BGH33_B04c-pDONR221

D P A D P N V L H A N V A T S T D G G L T W S
 166 167 168 169 170 171 172 173 174 175 176 177 178 179 180 181 182 183 184 185 186 187 188

5' CACCGGACCATCACGGCCGACATCACCCCGGATCCGGGCTGGCGCAGCCGCTTCGCCGCCTCCGGCGAAG
 3' GTGGCCTGGTAGTGCCGGCTGTAGTGGGGCCTAGGCCCGACCGCTCGGCGAAGCGGCGGAGGCCGCTTC

5950

BGH33_B04c

BGH33_B04c-pDONR221

H R T I T A D I T P D P G W R S R F A A S G E
 189 190 191 192 193 194 195 196 197 198 199 200 201 202 203 204 205 206 207 208 209 210 211

5' GCATCCAGCTCCGCTATGGACCCACGCCGGTCGACTCATCCAGCAGTACACGATCATCAACGCTGCCGG
 3' CGTAGGTCGAGGCGATACTGGGGTGCGGCCAGCTGAGTAGGTCGTCATGTGCTAGTAGTTGCGACGGCC

6020

BGH33_B04c

BGH33_B04c-pDONR221

G I Q L R Y G P H A G R L I Q Q Y T I I N A A G
 212 213 214 215 216 217 218 219 220 221 222 223 224 225 226 227 228 229 230 231 232 233 234 235

Ascl

Mrel

5' CGCCTTCCAGGCGGTGAGCGTGTACAGCGACGACCACGGAAGGACCTGGCGCGCCGGCGAAGCCGTCCGG
 3' GCGGAAGGTCCGCCACTCGCACATGTCGCTGCTGGTGCCTTCTGGACCGCGCGGCCGCTTCGGCAGCCC

6090

BGH33_B04c

BGH33_B04c-pDONR221

A F Q A V S V Y S D D H G R T W R A G E A V G
 236 237 238 239 240 241 242 243 244 245 246 247 248 249 250 251 252 253 254 255 256 257 258

5' GTCGGCATGGACGAGAACAAGACCGTGGAACTCTCCGATGGCCGGGTCCTGCTCAACAGCCGCGACTCGG
 3' CAGCCGTACCTGCTCTTGTTCTGGCACCTTGAGAGGCTACCGGCCAGGACGAGTTGTTCGGCGCTGAGCC

6160

BGH33_B04c

BGH33_B04c-pDONR221

V G M D E N K T V E L S D G R V L L N S R D S
 259 260 261 262 263 264 265 266 267 268 269 270 271 272 273 274 275 276 277 278 279 280 281

BGH33_B04c-pET16-DEST

5' CCCGCAGCGGATACCGTAAGGTGGCCGTCTCCACTGACGGCGGCCACAGCTACGGCCCGGTGACCATCGA
 0 ++++++
 3' GGGCGTCGCCTATGGCATTCCACCGGCAGAGGTGACTGCCGCCGGTGTTCGATGCCGGGCCACTGGTAGCT

6230

BGH33_B04c

BGH33_B04c-pDONR221

A R S G Y R K V A V S T D G G H S Y G P V T I D
 282 283 284 285 286 287 288 289 290 291 292 293 294 295 296 297 298 299 300 301 302 303 304 305

5' CCGCGACCTCCCCGACCCGACGAACAACGCATCGATCATCCGGGCCTTCCCTGACGCCCCGGCCGGCTCC
 0 ++++++
 3' GGCGCTGGAGGGGCTGGGCTGCTTGTTCGCTAGCTAGTAGGCCCGGAAGGGACTGCGGGGCCGGCCGAGG

6300

BGH33_B04c

BGH33_B04c-pDONR221

R D L P D P T N N A S I I R A F P D A P A G S
 306 307 308 309 310 311 312 313 314 315 316 317 318 319 320 321 322 323 324 325 326 327 328

5' GCGCGGGCCAAGGTCCTGCTCTTCTCCAACGCCCGCCAGCCAGACCTCGCGCAGTCAGGGCACCATCCGGA
 0 ++++++
 3' CGCGCCCGGTTCCAGGACGAGAAGAGGTTGCGGCGGTCGGTCTGGAGCGCGTCAGTCCCGTGGTAGGCCT

6370

BGH33_B04c

BGH33_B04c-pDONR221

A R A K V L L F S N A A S Q T S R S Q G T I R
 329 330 331 332 333 334 335 336 337 338 339 340 341 342 343 344 345 346 347 348 349 350 351

BstBI

5' TGTCTGCGACGATGGCCAGACCTGGCCGGTTCGAAGGTCTTCCAGCCCGGCTCGATGTCGTA CTCCAC
 0 ++++++
 3' ACAGGACGCTGCTACCGGTCTGGACCGGCCAAAGCTTCCAGAAGGTCGGGCCGAGCTACAGCATGAGGTG

6440

BGH33_B04c

BGH33_B04c-pDONR221

M S C D D G Q T W P V S K V F Q P G S M S Y S T
 352 353 354 355 356 357 358 359 360 361 362 363 364 365 366 367 368 369 370 371 372 373 374 375

5' CCTGACCGCACTGCCCCGACGGCACCTACGGGCTGCTGTACGAGCCGGGCACCCGGCATCAGATACGCCAAC
 0 ++++++
 3' GGACTGGCGTGACGGGCTGCCGTGGATGCCCGACGACATGCTCGGCCCGTGGCCGTAGTCTATGCGGTTG

6510

BGH33_B04c

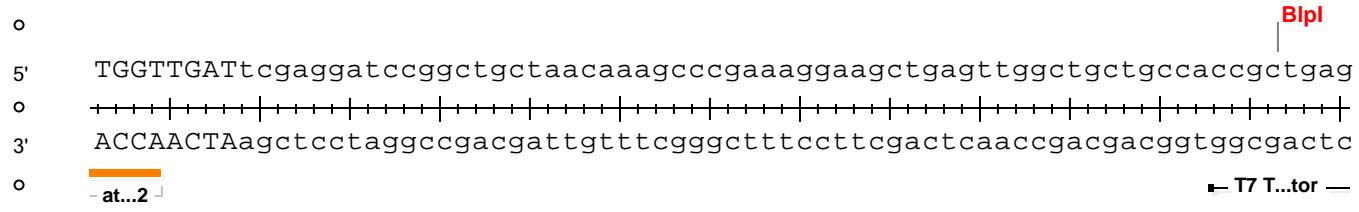
BGH33_B04c-pDONR221

L T A L P D G T Y G L L Y E P G T G I R Y A N
 376 377 378 379 380 381 382 383 384 385 386 387 388 389 390 391 392 393 394 395 396 397 398

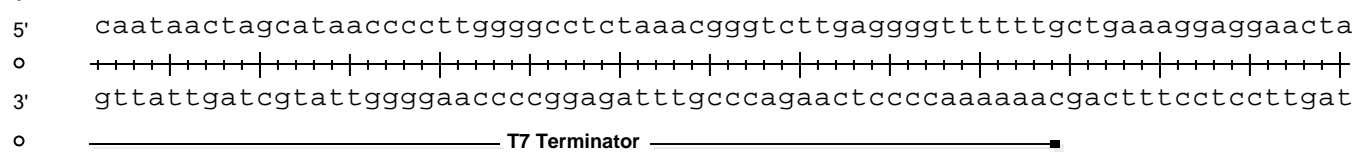
BGH33_B04c-pET16-DEST



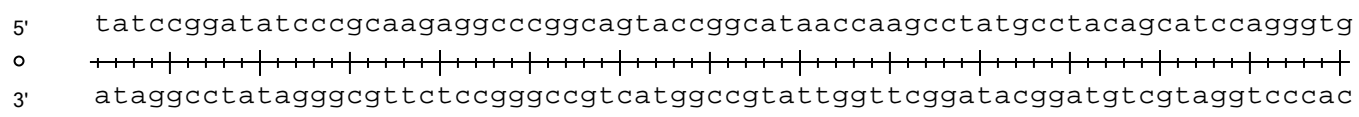
6580



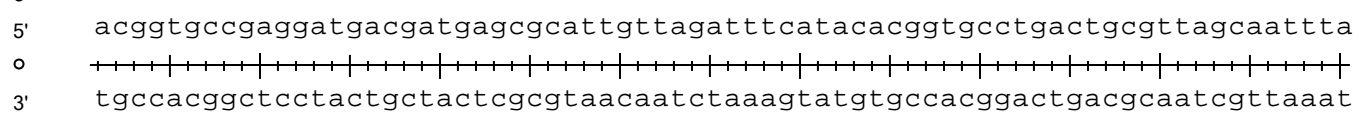
6650



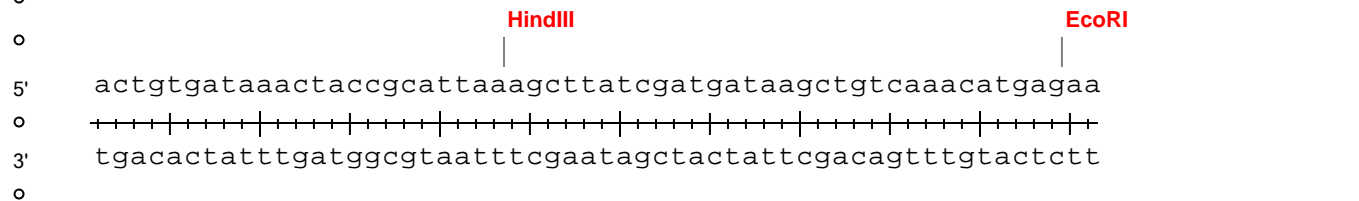
6720



6790



6860



6916