

BGH02_B02c-pET16-DEST

FspAI

MscI

5' cctagccgggtcctcaacgacaggagcacgatcatgcgccaccgctggccaggaccaacgctgcccgaga
 3' ggatcgccccaggagttgctgtcctcgtgctagtagcgcgtgggcaccggctcctgggttgcgacgggctct
 5' tgcgccgcgtgcggtgctggagatggcggacgcgatggatatggttctgccaagggttggtttgcgcaatt
 3' acgcggcgcacgcccagacgacctctaccgcctgcgctacctatacaagacgggttcccaaccaaacgcgtaa
 5' cacagttctccgcaagaattgattggctccaattcttggagtggatccgcttagcgaggtgcccgcgg
 3' gtgtcaagaggcggttcttaactaaccgaggttaagaacctcaccacttaggcaatcgctccacggcggcc
 5' cttccattcaggtcgaggtggcccggctccatgcaccgcgacgcaacgcggggaggcagacaaggtatag
 3' gaagtaagtccagctccaccgggcccaggtacgtggcgctgcggttgcgcccctccgtctgttccatatac
 5' ggccgcgctacaatccatgccaaaccggttccatgtgctcgccgaggcggcataaatcgccgtgacgatc
 3' ccgcccggatgtaggtacggttgggcaaggtacacgagcggctccgcccgtatttagcggcactgctag
 5' agcgggtccagtgatcgaagttaggctggtaagagccgcgagcgcgatccttgaagctgtccctgatggtcgt
 3' tcgccagggtcactagcttcaatccgaccattctcggcgctcgcctaggaacttcgacagggactaccagca
 5' catctacctgcctggacagcatggcctgcaacgcgggcaccccgatgccgcccgaagcgagaagaatcat
 3' gtagatggacggacctgtcgtaccggacggttgcgcccgtagggctacggcggccttcgctcttcttagta
 5' aatggggaaggccatccagcctcgcgctcgcgaacgccagcaagacgtagcccagcgcgctcgccgccatg
 3' ttacccttccggtaggtcggagcgcagcgttgcggctcgttctgcatcgggtcgcgcagccggcgggtac
 5' ccggcgcataatggcctgcttctcgcgaaacgtttgggtggcgggaccagtgacgaaggcttgagcagagg
 3' ggccgctattaccggacgaagagcggcttgcgaaaccaccgcccctggctcactgcttccgaactcgctccc
 5' cgtgcaagattccgaataccgcaagcgcagggccgatcatcgtcgcgctccagcgaagcggtcctcgcc
 3' gcacgttctaaggcttatggcgttcgtgtccggctagtagcagcgcgaggtcgcttccgccaggagcgg
 5' gaaaatgaccagagcgcgtgccggcacctgtcctacgagttgcatgataaagaagacagtcataagtgcg
 3' cttttactgggtctcgcgacggccggtggacaggatgctcaacgtactatcttctgtcagtattcacgc
 5' gcgacgatagtcgatgccccgcgcccaccggaaggagctgactgggttgaaggctctcaaggcatcggtc
 3' cgctgctatcagtagggggcgcgggtggccttctcgcactgacccaacttccgagagttcccgtagccag
 5' gagatcccgggtgcctaataagtgagtaacttacattaattgcggttgcgctcactgcccgctttccagtc
 3' ctctagggccacggattactcactcgattgaatgtaattaacgcaacgcgagtgacggggcgaagggtcag

2940

3010

3080

3150

3220

3290

3360

3430

3500

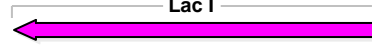
3570

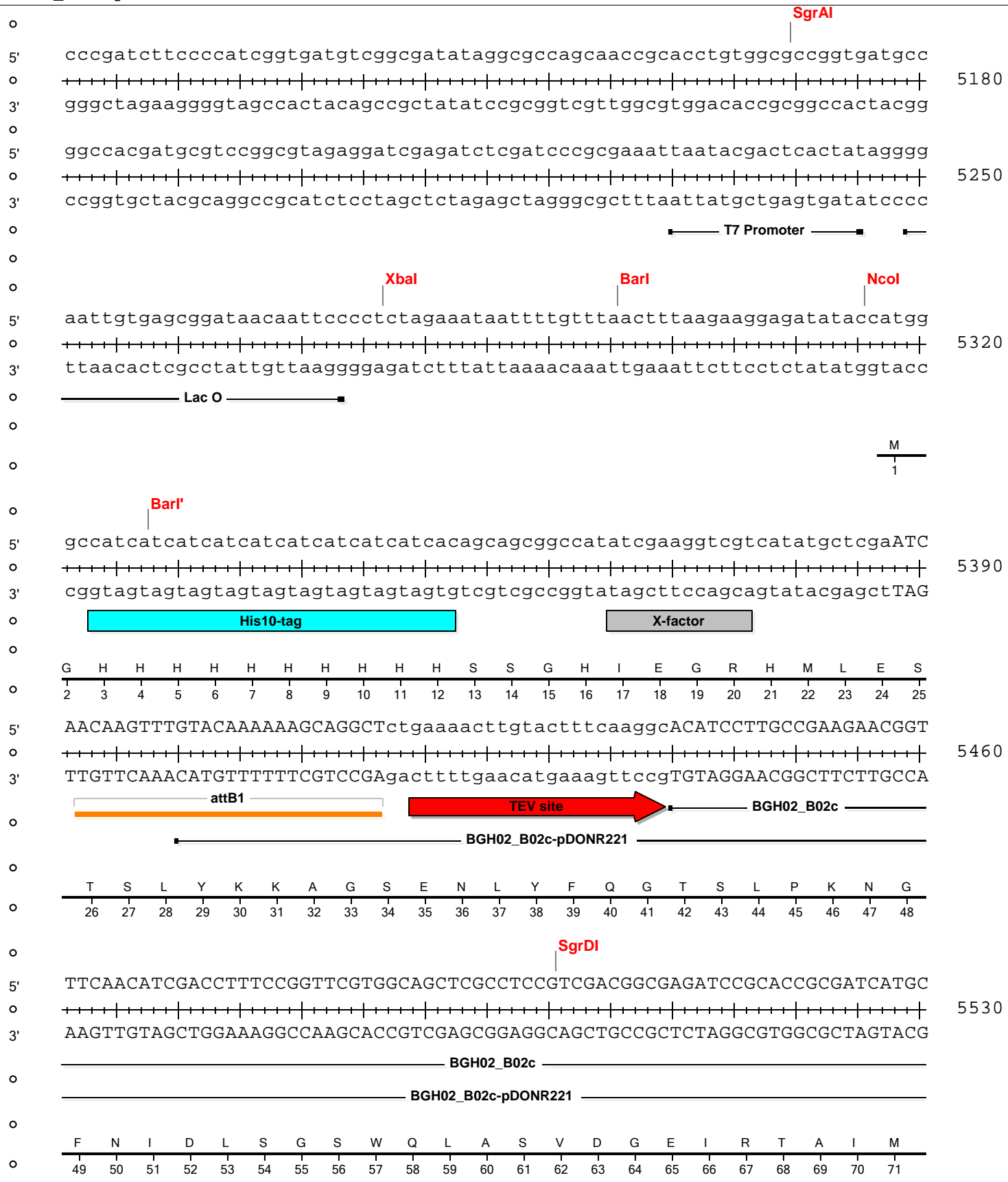
3640

3710

3780

Lac I





BGH02_B02c-pET16-DEST

5' TGTTCGCTGCAACCTCTATCCGTCGACCGAGGACTTCTCGACAATGTGACGATCGAGGTCGACTACCA
 0 ++++++
 3' ACAAACGGACGTTGGAGATAGGCAGCTGGCTCCTGAAAGAGCTGTTACACTGCTAGCTCCAGCTGATGGT

6650

BGH02_B02c

BGH02_B02c-pDONR221

M F A C N L Y P S T E D F L D N V T I E V D Y Q
 422 423 424 425 426 427 428 429 430 431 432 433 434 435 436 437 438 439 440 441 442 443 444 445

5' GGTGCGCCGGCTCTCCTCGCATGCCTCGATCGTGCTCTGGTGC GGCGACAATGAACTGGTCGAGCGCTC
 0 ++++++
 3' CCACGCGGCCGAGAGGAGCGTACGGAGCTAGCACGAGACCACGCCGCTGTTACTTGACCAGCCTCGCGAG

6720

BGH02_B02c

BGH02_B02c-pDONR221

V R R L S S H A S I V L W C G D N E L V G A L
 446 447 448 449 450 451 452 453 454 455 456 457 458 459 460 461 462 463 464 465 466 467 468

5' ACCTGGTTCGAGGAATCGCGAAGGATCGCGACCGCTATCTCGTCTCTTATGATCGCCTCAACCGCACGA
 0 ++++++
 3' TGGACCAAGCTCCTTAGCGCCTTCTAGCGCTGGCGATAGAGCAGAGAATACTAGCGGAGTTGGCGTGCT

6790

BGH02_B02c

BGH02_B02c-pDONR221

T W F E E S R K D R D R Y L V S Y D R L N R T
 469 470 471 472 473 474 475 476 477 478 479 480 481 482 483 484 485 486 487 488 489 490 491

5' TCGAGCAGGCAGTGAAAAAGGCGCTGCCCGGCGCGGTCTGGTGGCCGTCGAGCCCGGCTCCGGCTATCT
 0 ++++++
 3' AGCTCGTCCGTCACCTTTTTCCGCGACGGGCCGCGCCAGACCACCGGCAGCTCGGGCCGGAGGCCGATAGA

6860

BGH02_B02c

BGH02_B02c-pDONR221

I E Q A V K K A L P G A V W W P S S P A S G Y L
 492 493 494 495 496 497 498 499 500 501 502 503 504 505 506 507 508 509 510 511 512 513 514 515

Nsil

5' CGATTTTCGGCGATGCCTGGCATGCGGACGGTCCGGCGACATGCATTA TACTGGTCGGTCTGGCAGGAGAAC
 0 ++++++
 3' GCTAAAGCCGCTACGGACCGTACGCCTGCCAGGCCGCTGTACGTAATGACCAGCCAGACCGTGCTCTTG

6930

BGH02_B02c

BGH02_B02c-pDONR221

D F G D A W H A D G S G D M H Y W S V W H E N
 516 517 518 519 520 521 522 523 524 525 526 527 528 529 530 531 532 533 534 535 536 537 538

BGH02_B02c-pET16-DEST

5' AAGTCGTTTCGACAATTACCGCTCGGTGCGTCCGCGCTTCTGCTCGGAATTCGGCTTCCAGTCCTATACGT
 0 ++++++
 3' TTCAGCAAGCTGTTAATGGCGAGCCACGCAGGCGGAAGACGAGCCTTAAGCCGAAGGTCAGGATATGCA

7000

BGH02_B02c

BGH02_B02c-pDONR221

K S F D N Y R S V R P R F C S E F G F Q S Y T
 539 540 541 542 543 544 545 546 547 548 549 550 551 552 553 554 555 556 557 558 559 560 561

5' CGCTGCCTGTGATCAAGACCTATGCCGAGGCGAAAGACATGAACGTCGCTTCCCGGTCATGGAGCTGCA
 0 ++++++
 3' GCGACGGACACTAGTTCTGGATACGGCTCCGCTTTCTGTACTTGCAGCGAAGGGGCCAGTACCTCGACGT

7070

BGH02_B02c

BGH02_B02c-pDONR221

S L P V I K T Y A E A K D M N V A S P V M E L H
 562 563 564 565 566 567 568 569 570 571 572 573 574 575 576 577 578 579 580 581 582 583 584 585

5' CCAGAAGAATGCCGGCGGCAACGAGCGCATGCCGGCACGATGTTCCGTTATTTCCGATTCCTCAAGGAT
 0 ++++++
 3' GGTCTTCTTACGGCCGCGTGTCTCGCGTAGCGGCCGTGCTACAAGGCAATAAAGGCTAAGGGGTTCTTA

7140

BGH02_B02c

BGH02_B02c-pDONR221

Q K N A G G N E R I A G T M F R Y F R F P K D
 586 587 588 589 590 591 592 593 594 595 596 597 598 599 600 601 602 603 604 605 606 607 608

5' TTCCCGAACTTCGTCTATCTCTCCAGATCCAACAGGGGCTGGCGATCAAGACGGCGGTGGAATACTGGC
 0 ++++++
 3' AAGGGCTTGAAGCAGATAGAGAGGGTCTAGGTTGTCCCGACCGTAGTTCTGCCGCCACCTTATGACCG

7210

BGH02_B02c

BGH02_B02c-pDONR221

F P N F V Y L S Q I Q Q G L A I K T A V E Y W
 609 610 611 612 613 614 615 616 617 618 619 620 621 622 623 624 625 626 627 628 629 630 631

5' GGTCGCTCAAACCCCATTCATGGGCACGATCTACTGGCAGCTCAACGACACCTGGCCGGTTCGCCTCTTG
 0 ++++++
 3' CCAGCGAGTTTGGGGTAACGTACCCGTGCTAGATGACCGTCGAGTTGCTGTGGACCGCCAGCGGAGGAC

7280

BGH02_B02c

BGH02_B02c-pDONR221

R S L K P H C M G T I Y W Q L N D T W P V A S W
 632 633 634 635 636 637 638 639 640 641 642 643 644 645 646 647 648 649 650 651 652 653 654 655

BGH02_B02c-pET16-DEST

NotI

5' GTCGAGCCTCGACTATGGCGGCCGCTGGAAGGCGATGCACTATCTCGTCAAGCGCTTCTTCCAGCCGGTC
 3' CAGCTCGGAGCTGATACCGCCGGCGACCTTCCGCTACGTGATAGAGCAGTTCGCGAAGAAGGTCGGCCAG

7350

BGH02_B02c

BGH02_B02c-pDONR221

S S L D Y G G R W K A M H Y L V K R F F Q P V
 656 657 658 659 660 661 662 663 664 665 666 667 668 669 670 671 672 673 674 675 676 677 678

5' GCGGTCGCGGCCATTTCCTTCCGACGACGGAAAGACGATTCGCTTCTCGCTGGTCAACGACACGCTTGCCG
 3' CGCCAGCGCCGGTAAGGAAGGCTGCTGCCTTTCTGCTAAGCGAAGAGCGACACAGTTGCTGTGCGAACGGC

7420

BGH02_B02c

BGH02_B02c-pDONR221

A V A A I P S D D G K T I R F S L V N D T L A
 679 680 681 682 683 684 685 686 687 688 689 690 691 692 693 694 695 696 697 698 699 700 701

5' ATGTCAGCGTCGACCTTTCGATCTCGCTGCTGACGATGCAGGGCGAACGCCGGCACCTGAGAGACGTACA
 3' TACAGTCGCAGCTGGAAGCTAGAGCGACGACTGCTACGTCCCCTTGCGCCGTGGACTCTCTGCATGT

7490

BGH02_B02c

BGH02_B02c-pDONR221

D V S V D L S I S L L T M Q G E R R H L R D V Q
 702 703 704 705 706 707 708 709 710 711 712 713 714 715 716 717 718 719 720 721 722 723 724 725

5' GGCCATATGTTCCGCGGATGCGGCCGTCCTGACCACGAGCATCGACGTTTCCGATATTCGAGGGGAACG
 3' CCGGTATAACAAGCGGCCTACGCCGGCAGTGACGGTGCTCGTAGCTGCAAAGGCTATAAGGGCTCCCTTGC

7560

BGH02_B02c

BGH02_B02c-pDONR221

A I C S P D A A V T A T S I D V S D I P E G T
 726 727 728 729 730 731 732 733 734 735 736 737 738 739 740 741 742 743 744 745 746 747 748

5' TTGCTTGCCTGGCGTTTCACCGCGTCGAACGGCACGGGCGGCGAGGGGCACCATGTCAACGGTACCTACA
 3' AACGAACGGACCGCAAAGTGGCGCAGCTTGCCGTGCCCGCCGCTCCCGTGGTACAGTTGCCATGGATGT

7630

Acc65I KpnI

BGH02_B02c

BGH02_B02c-pDONR221

L L A W R F T A S N G T G G E G H H V N G T Y
 749 750 751 752 753 754 755 756 757 758 759 760 761 762 763 764 765 766 767 768 769 770 771

BGH02_B02c-pET16-DEST

5' AGGCGCTGGAGCTGGAACCCGCGGGGCTGACAGTACCCACGAATATGTTCGAGGAGAATGGCTCGGTCTGA
 0 ++++++
 3' TCCGCGACCTCGACCTTGGGCGCCCCGACTGTCTAGTGGGTGCTTATACAGCTCCTCTTACCGAGCCAGCT

7700

BGH02_B02c

BGH02_B02c-pDONR221

K A L E L E P A G L T V T H E Y V E E N G S V D
 772 773 774 775 776 777 778 779 780 781 782 783 784 785 786 787 788 789 790 791 792 793 794 795

5' CATCAACGTACCCGCGAAGGGACTTGCCTTTTCGTGATGATCGAAACCGAGACCGGCAAATATTCC
 0 ++++++
 3' GTAGTTGCAGTGGCGCTTCCCTGAACCGGAAAAGCACTACTAGCTTTGGCTCTGGCTGCCGTTTATAAGG

7770

BGH02_B02c

BGH02_B02c-pDONR221

I N V T A K G L A L F V M I E T E T D G K Y S
 796 797 798 799 800 801 802 803 804 805 806 807 808 809 810 811 812 813 814 815 816 817 818

5' GACAACGCCTTCGATCTTGC GGCCGGCGAGAGCCGCCGATCGCCTTTACCCCGGCACGGCCGCTCGATC
 0 ++++++
 3' CTGTTGCGGAAGCTAGAACGCCGGCCGCTCTCGGCGGCGTAGCGGAAATGGGGCCGTGCCGGCGAGCTAG

7840

BGH02_B02c

BGH02_B02c-pDONR221

D N A F D L A A G E S R R I A F T P A R P L D
 819 820 821 822 823 824 825 826 827 828 829 830 831 832 833 834 835 836 837 838 839 840 841

5' GTGGCGCGCTTCCGGAGTTCCGGTTCTACGACCTGTATTCCTGCCAGTCGGCGGATTAGGACCCAGCTTT
 0 ++++++
 3' CACCGCGCGAAGGCCTCAAGGCCAAGATGCTGGACATAAGGACGGTCAGCCGCCTAATCCTGGGTGCGAAA

7910

BGH02_B02c

attB2

BGH02_B02c-pDONR221

R G A L P E F R F Y D L Y S C Q S A D
 842 843 844 845 846 847 848 849 850 851 852 853 854 855 856 857 858 859 860 861

5' CTTGTACAAAGTGGTTGATtcgaggatccggctgctaacaagcccgaaaggaagctgagttggctgctg
 0 ++++++
 3' GAACATGTTTCACCAACTAagtccttaggccgacgattgtttcgggctttccttcgactcaaccgacgac

7980

attB2

BipI

5' ccaccgctgagcaataactagcataacccttggggcctctaaacgggtcttgaggggttttttgctgaa
 0 ++++++
 3' ggtggcgactcgttattgatcgtattggggaaccccgagatttgcccagaactccccaaaaaacgactt

8050

T7 Terminator

5' aggaggaactatataccggatatcccgcaagaggcccggcagtagccgcataaccaagcctatgcctacag
 0 ++++++
 3' tcctccttgatataggcctatagggcgcttctccgggcccgtcatggccgatttggttcggatagcgatgctc

8120

BGH02_B02c-pET16-DEST

```
5'   catccaggggtgacgggtgccgaggatgacgatgagcgcattgtagatttcatacacgggtgcctgactgcg
o   ++++++|+++++|+++++|+++++|+++++|+++++|+++++|+++++|+++++|+++++|+++++|+++++|
3'   gtaggtcccactgccacggctcctactgctactcgcgtaacaatctaaagtatgtgccacggactgacgc
o
o
o
5'   ttagcaatttaactgtgataaactaccgcattaaagcttatcgatgataagctgtcaaacatgagaa
o   ++++++|+++++|+++++|+++++|+++++|+++++|+++++|+++++|+++++|+++++|+++++|+++++|
3'   aatcgttaaattgacactat ttgatggcgtaatttcgaatagctactattcgacagtttgtactctt
o
```